

# Rancho Canada planning documents by MPRPD should include connection to Martin Canyon

## Research & recommendations

By Fred Watson, PhD. 8<sup>th</sup> April 2018 (slightly updated 12<sup>th</sup> April 2018)

- There should be an underpass beneath Carmel Valley Rd connecting the former Rancho Canada golf course to Martin Canyon, for use by hikers, pedestrians, cyclists, wildlife, and streamflow
- Current planning documents should explicitly show this connection on maps as something that is envisioned for the future
- The land is public. The county owns a strip of land all the way from Carmel Valley Road up to Jacks Peak, and a dirt road exists on this county land extending directly upward from Carmel Valley Road.
- Note: Martin Canyon is a much better route than Roach Canyon (which also has an existing trail), because Roach Canyon doesn't really connect to anything public on the south side of Carmel Valley Road.
- The following slides use maps to illustrate at least 36 years of planning for a connection from Carmel River to Jacks Peak along Martin Canyon.
- A subset of these maps was shown to MPRPD staff and consultants on 2/8/18 (Larson, Nelson, Watson) and 3/8/18 (Payan, Watson)

**Acknowledgements.** For help in identifying, obtaining, and creating the documents referenced herein.

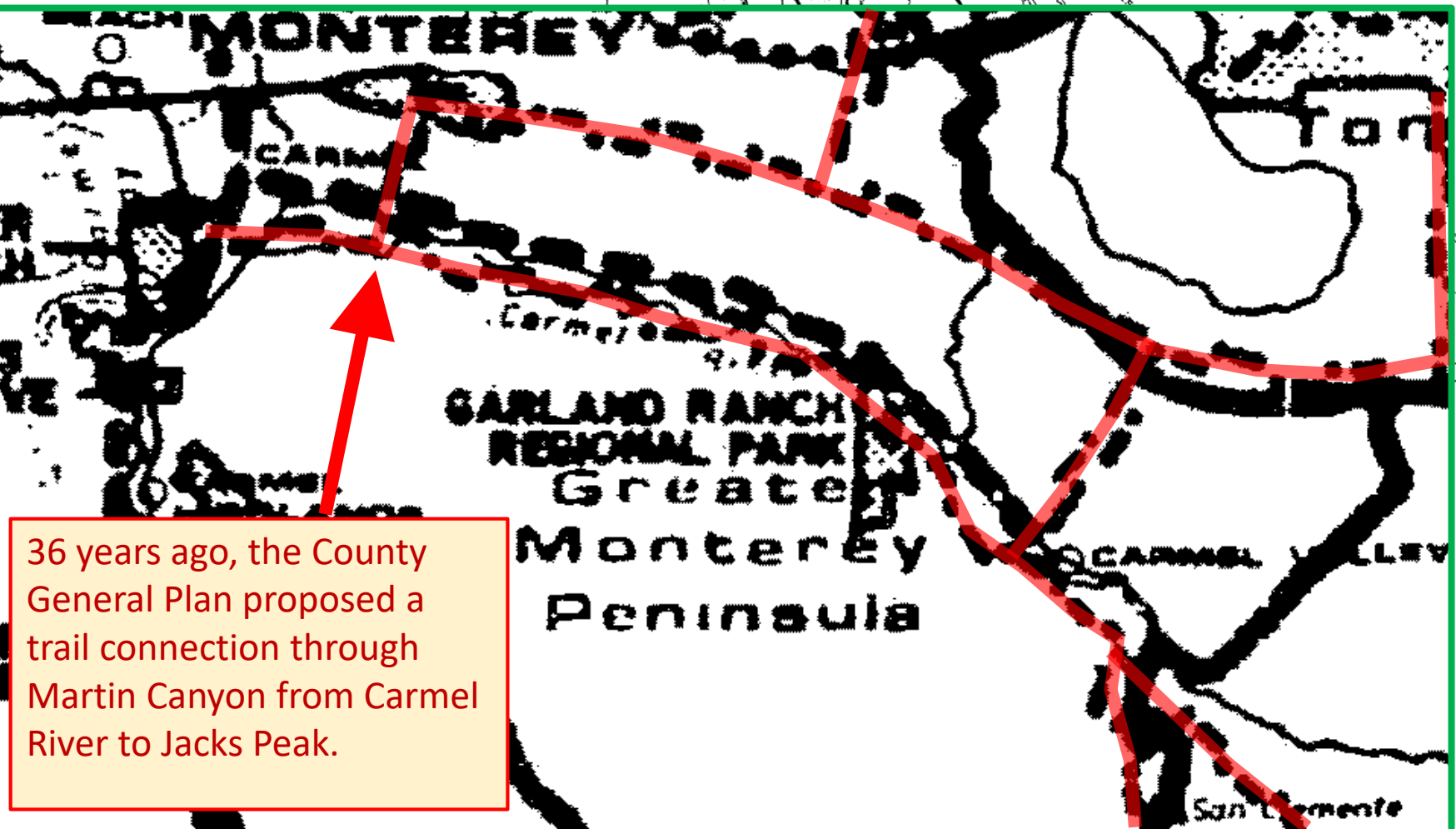
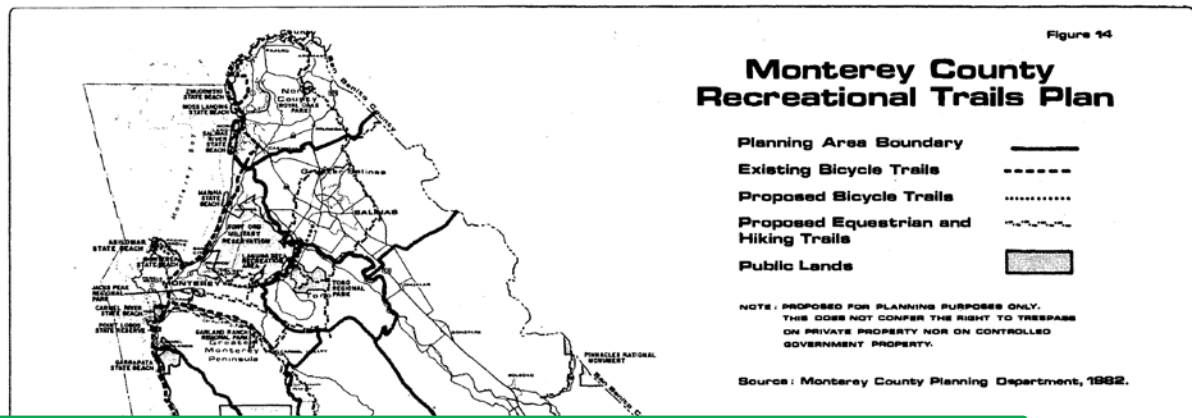
- Big Sur Land Trust
- Carmel Valley Association
- LandWatch Monterey County
- Pine Nut Press / Bates et al.
- Design Workshop
- Monterey County staff

1982

# Monterey County General Plan

Figure 14

(Red highlighting added by Watson, 2018)

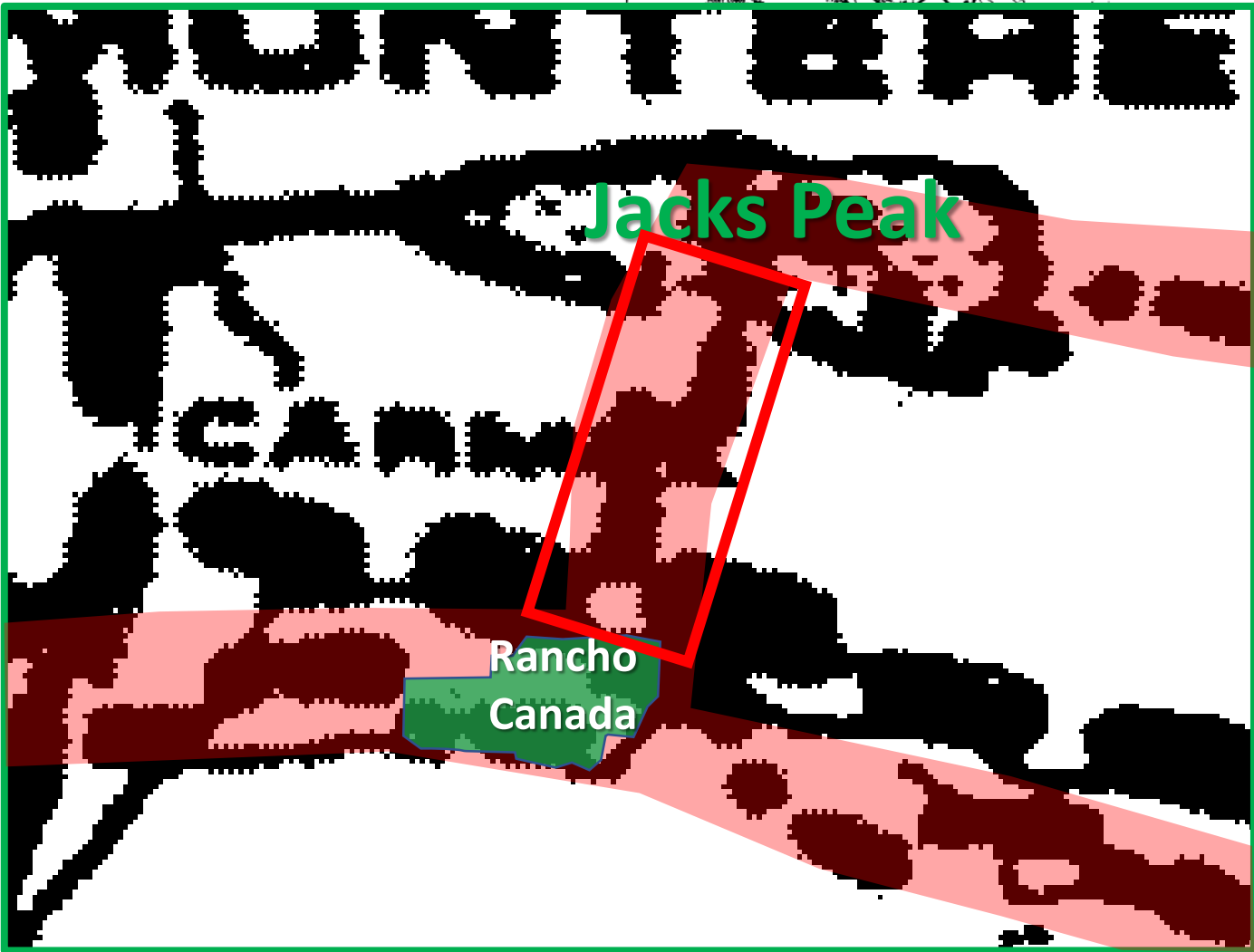
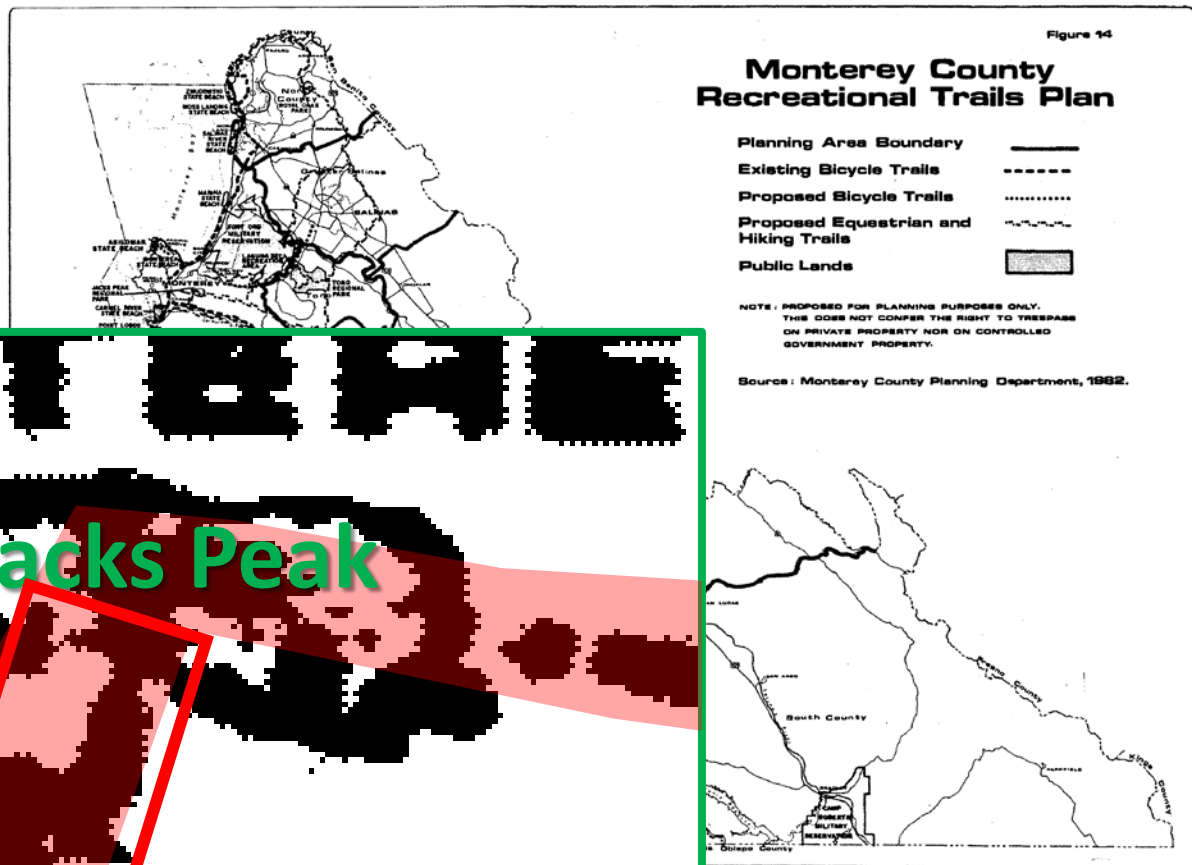


36 years ago, the County General Plan proposed a trail connection through Martin Canyon from Carmel River to Jacks Peak.

1982

Monterey County General Plan

Figure 14



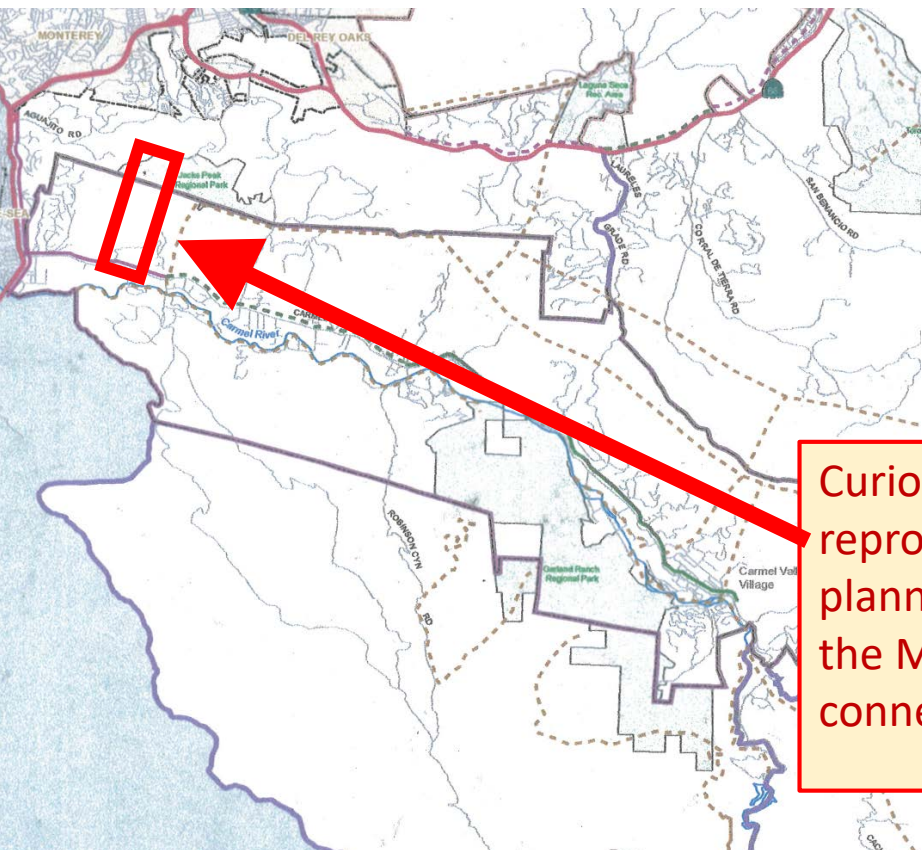
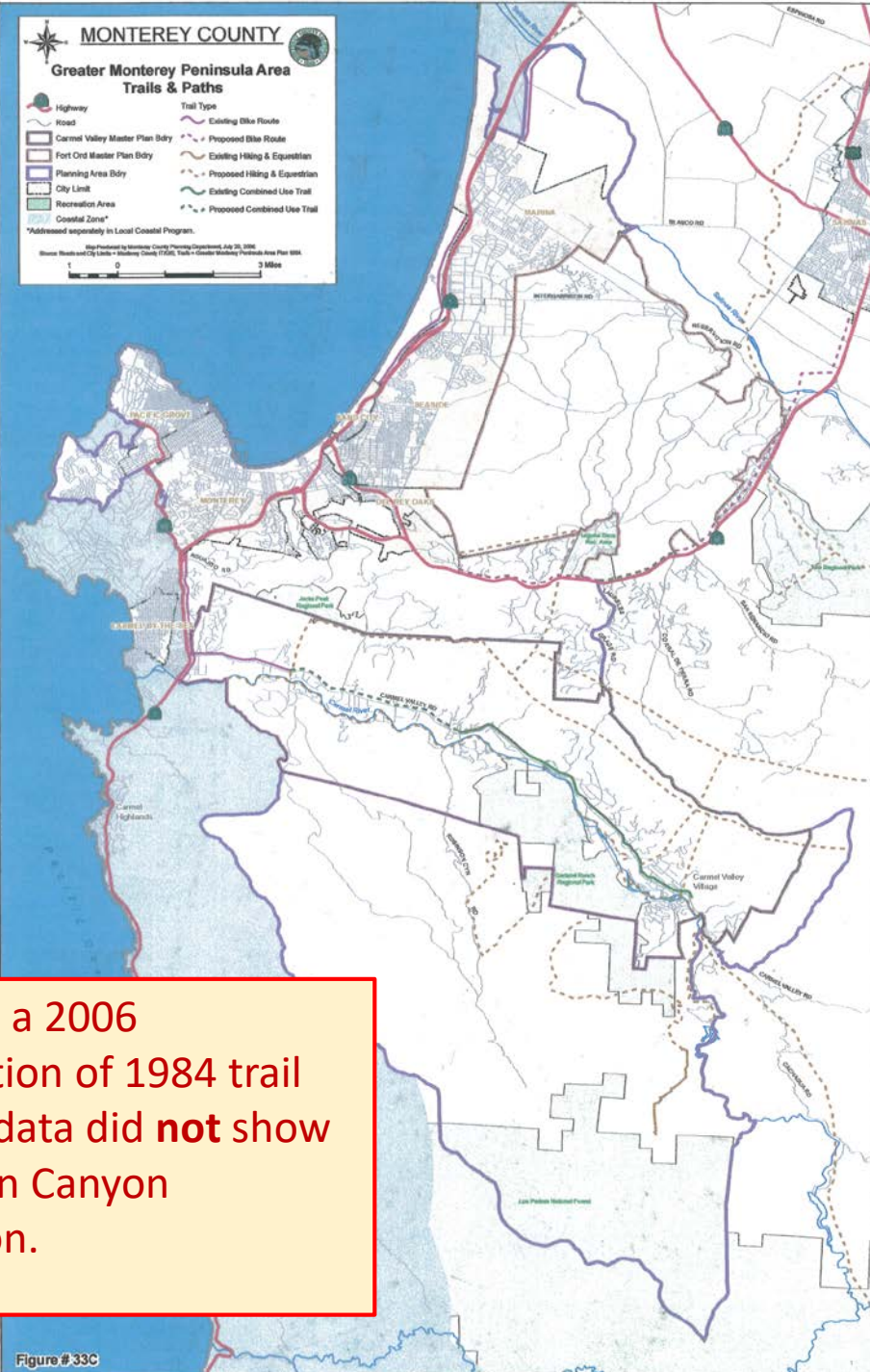
1984 / 2006

*“Greater Monterey Peninsula Area Trails & Paths*

*Map Produced by Monterey County Planning Department, July 20, 2006*

*Source: Trails = Greater Monterey Peninsula Area Plan 1984”*

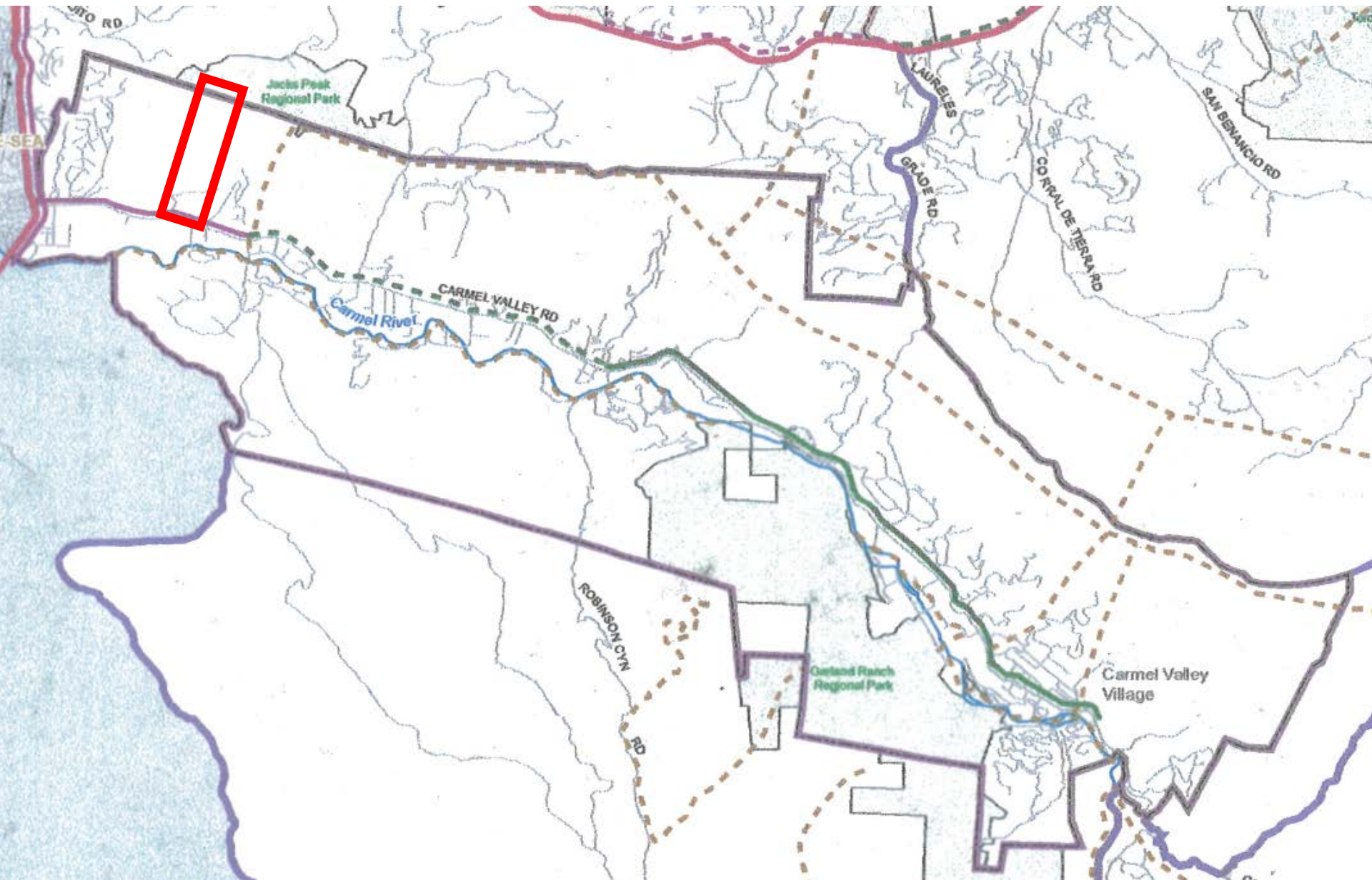
Apparently in approved GMPAP 1984  
Map probably produced for 2006 draft County General Plan Update 4.  
Not included in final approved 2010 GPU.



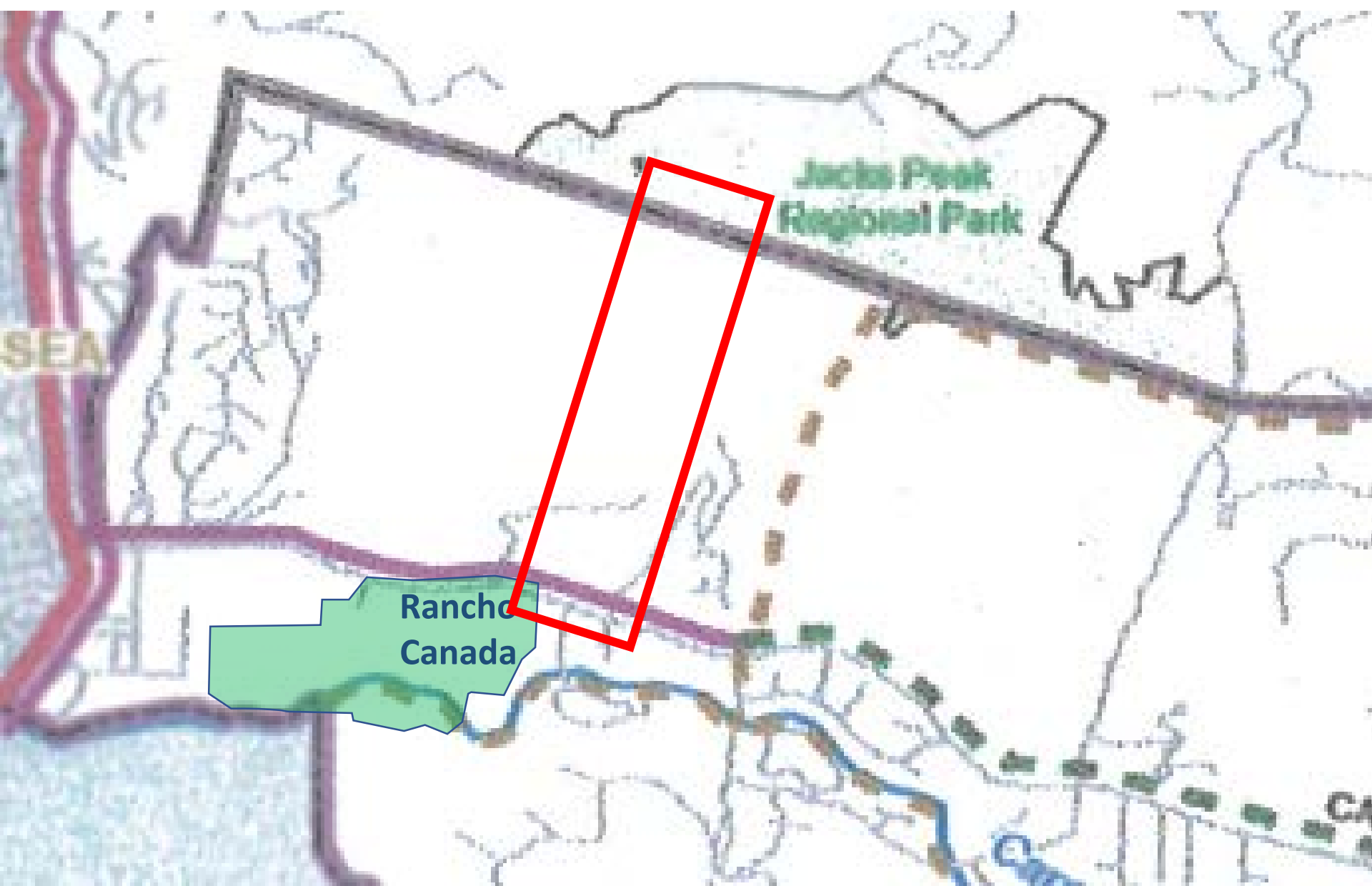
Curiously, a 2006 reproduction of 1984 trail planning data did **not** show the Martin Canyon connection.

Figure # 33C

1984 / 2006 (continued)



1984 / 2006



Jacks Peak  
Regional Park

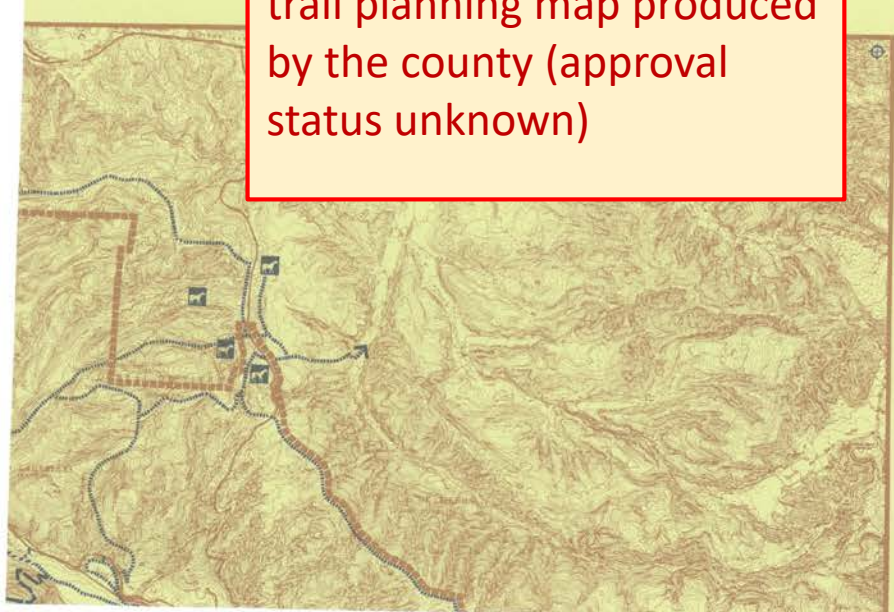
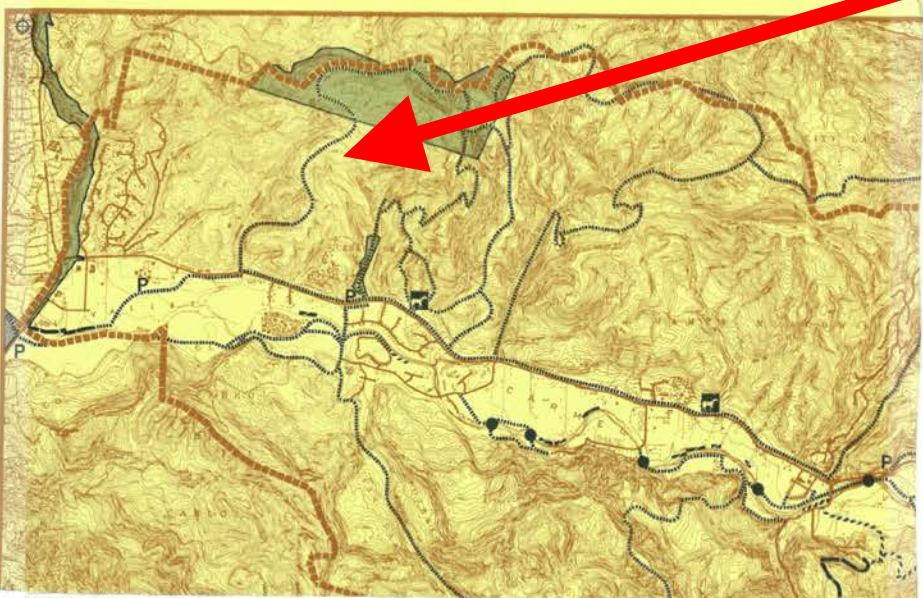
Rancho  
Canada

SEA

CA

# 1985 CV Trails Plan – Approval status unknown

The Martin Canyon connection was shown in much more detail in a 1985 trail planning map produced by the county (approval status unknown)

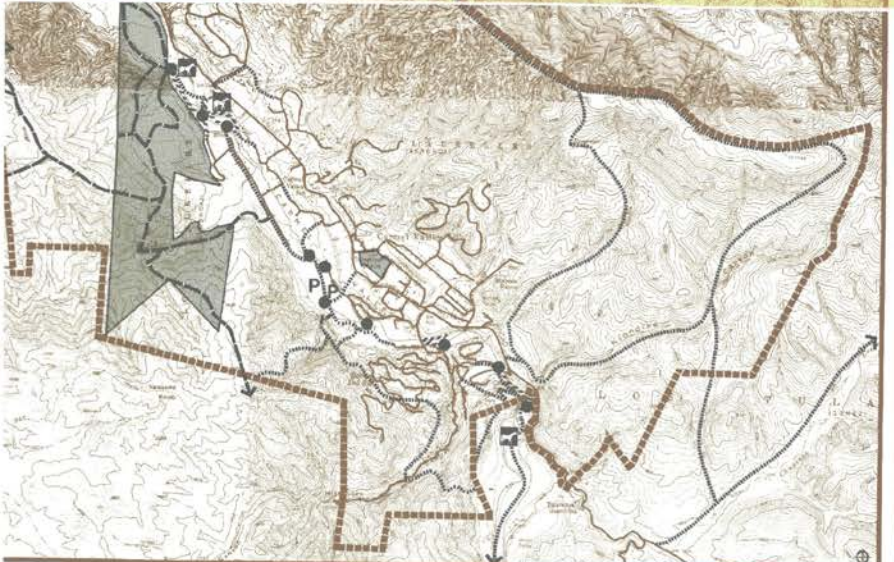


**CARMEL VALLEY TRAILS PLAN**

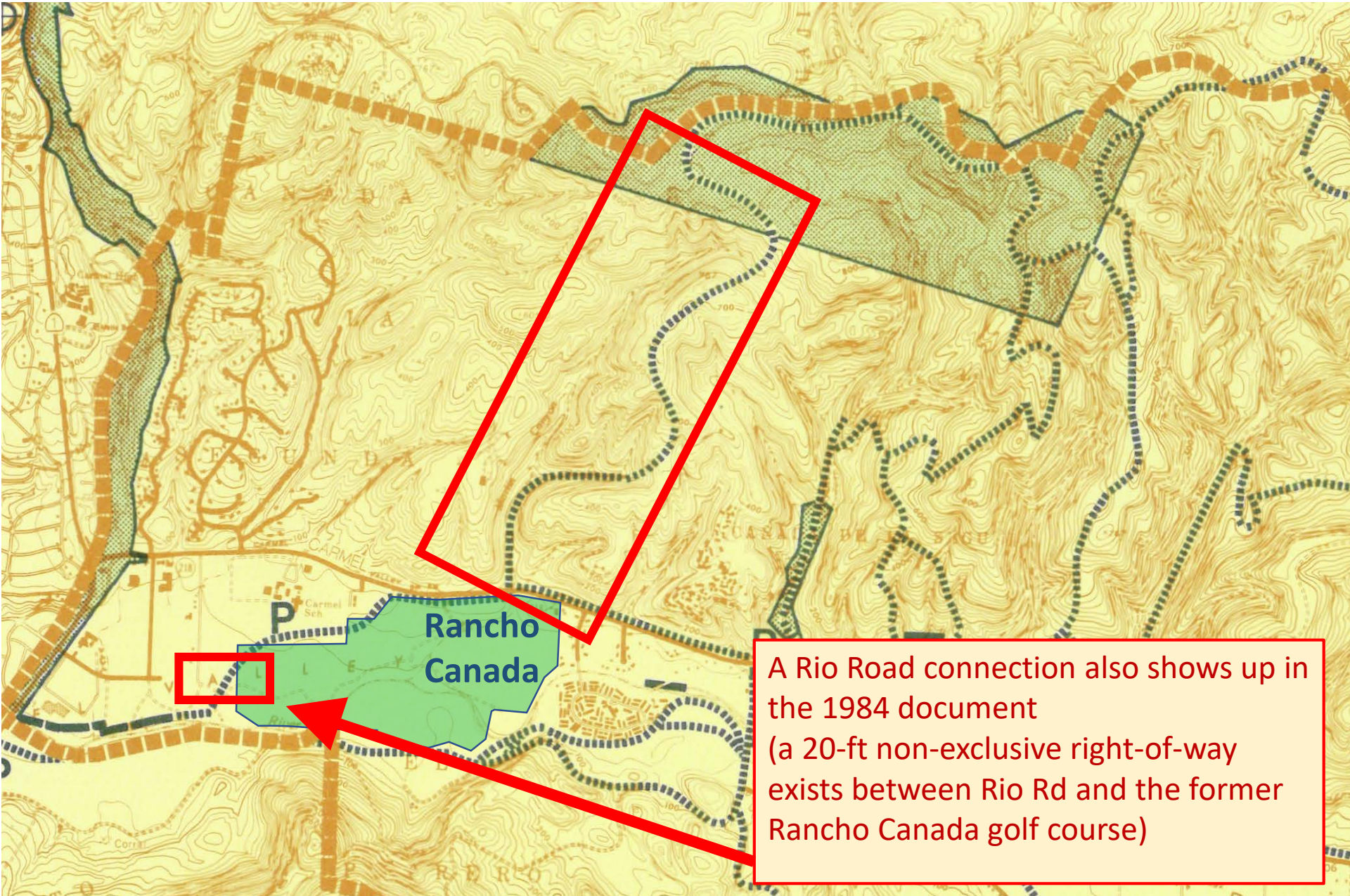
0 2000 4000 FEET

Monterey County Planning Department

▬▬▬▬ CARMEL VALLEY MASTER PLAN BOUNDARY	■ PARK & PUBLIC LAND
— EXISTING TRAILS	■ EXISTING EQUESTRIAN CENTER
--- PROPOSED TRAILS	● PROPOSED RIVER CROSSING
▬▬▬ DEDICATED EASEMENTS:	P PROPOSED TRAILHEAD PARKING
▬▬▬ TO BE RETAINED	
▬▬▬ RECOMMENDED FOR QUITCLAIM	



# 1985 CV Trails Plan – Approval status unknown

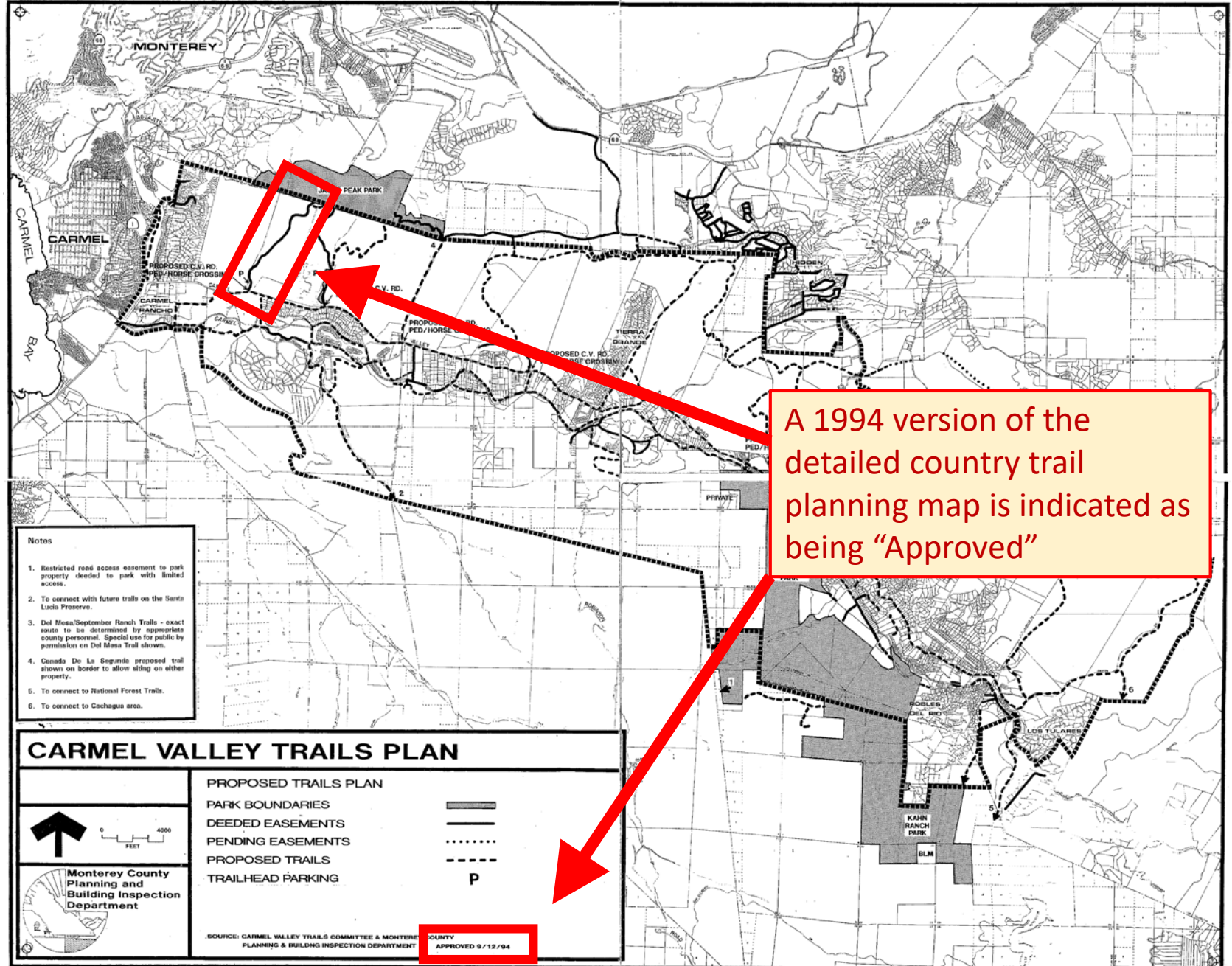


A Rio Road connection also shows up in the 1984 document (a 20-ft non-exclusive right-of-way exists between Rio Rd and the former Rancho Canada golf course)



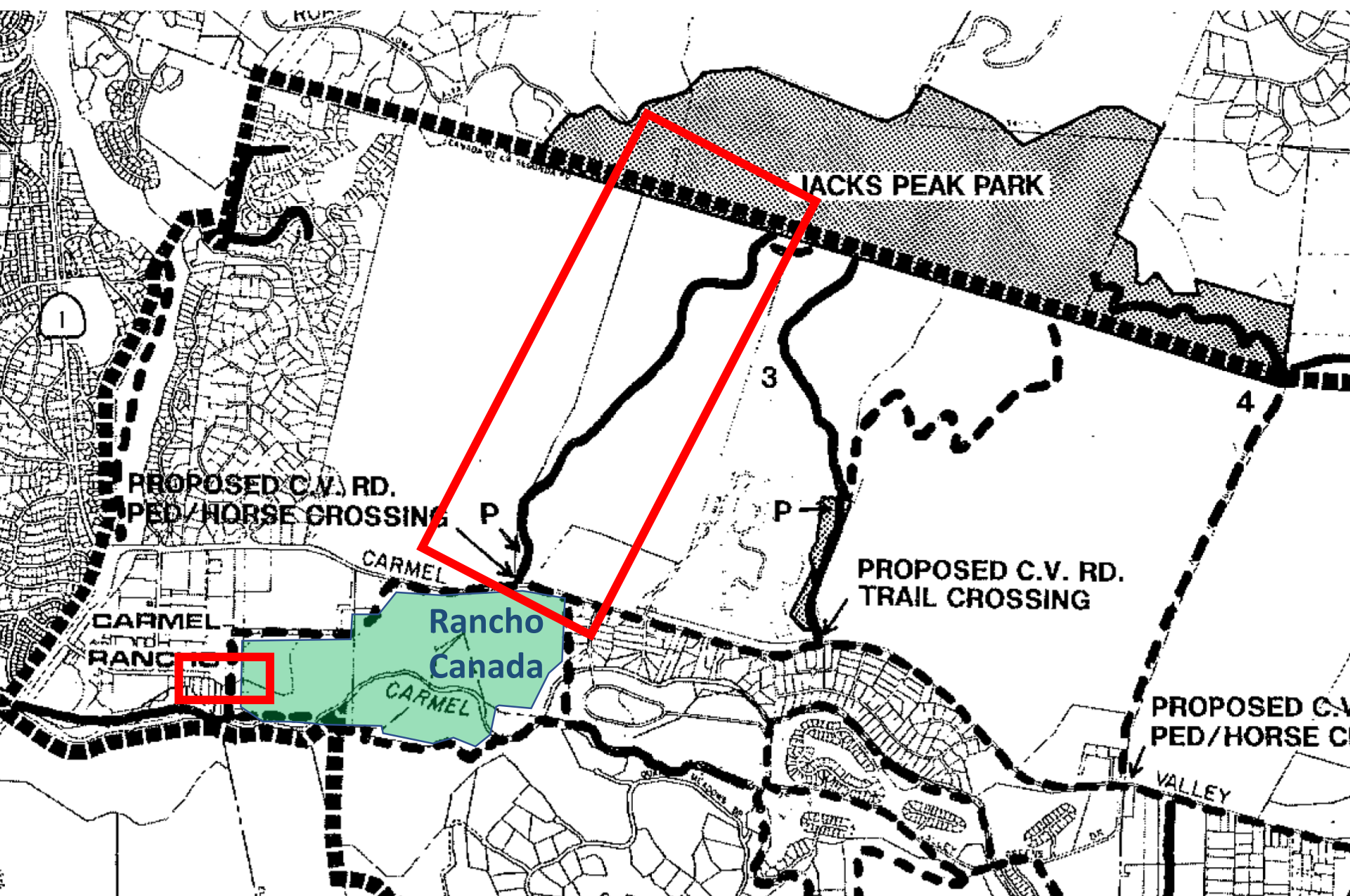
# 1994 CV Trails Plan – “Approved 9/12/94”

“Source: Carmel Valley Trails Committee & Monterey County Planning & Building Inspection Department”

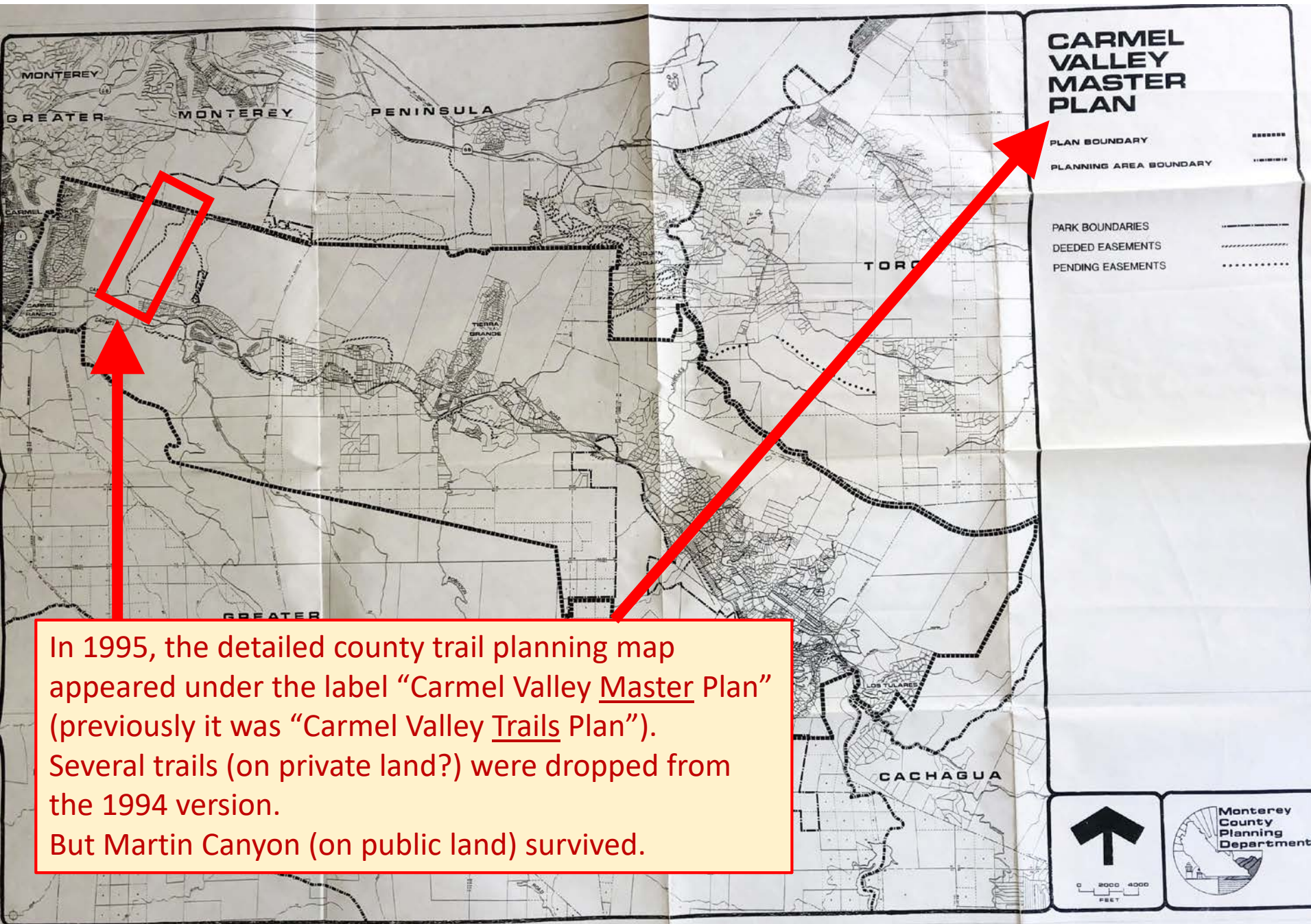


1994 CV Trails Plan – “Approved 9/12/94”

“Source: Carmel Valley Trails Committee & Monterey County Planning & Building Inspection Department”

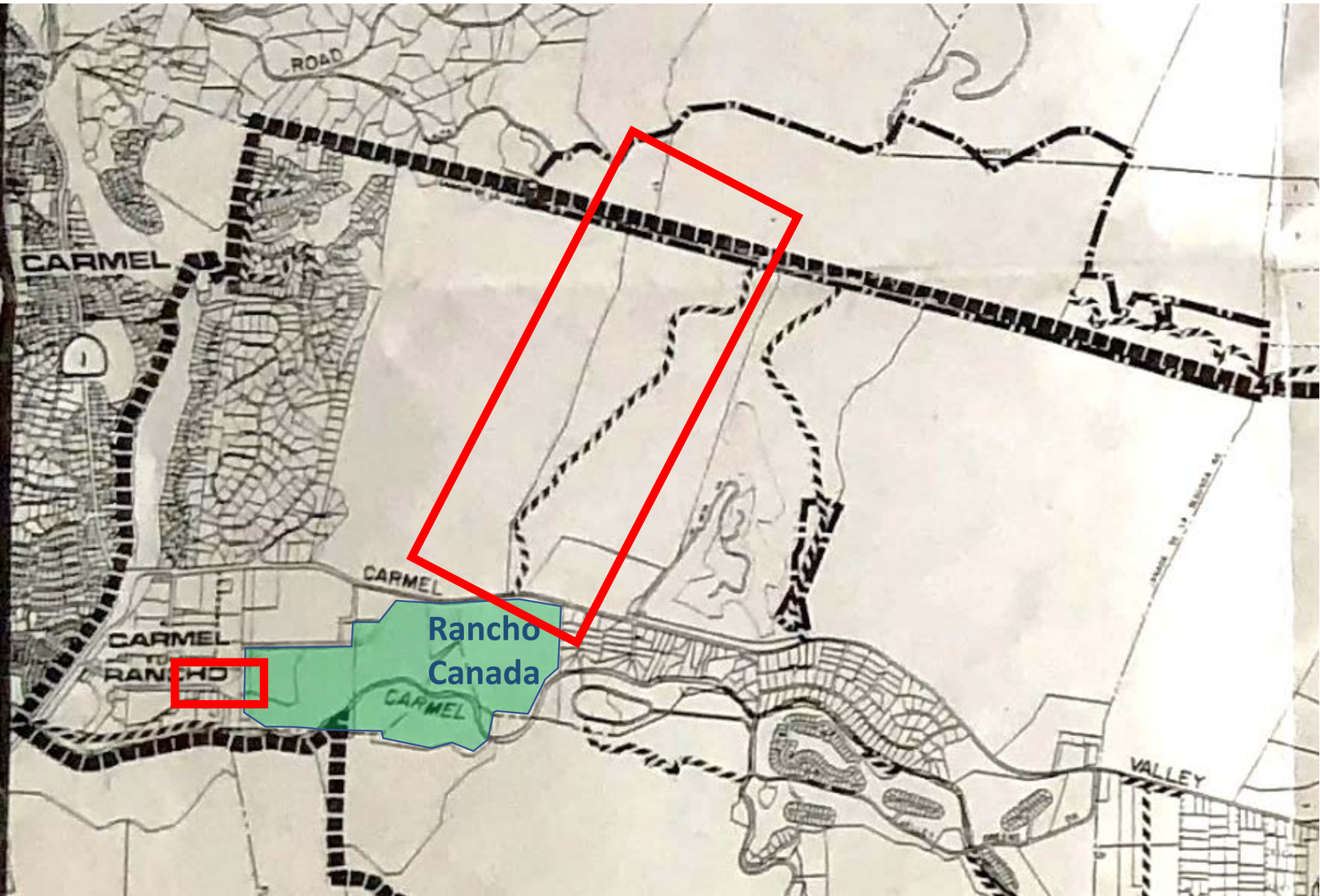


1995 (approx.) CV Master Plan – Approval status unknown



In 1995, the detailed county trail planning map appeared under the label “Carmel Valley Master Plan” (previously it was “Carmel Valley Trails Plan”). Several trails (on private land?) were dropped from the 1994 version. But Martin Canyon (on public land) survived.






1995 (approx.) CV Master Plan – Approval status unknown



# 2005 Vision Plan for Carmel River Parkway

(Produced by Cal Poly Pomona students for BSLT)

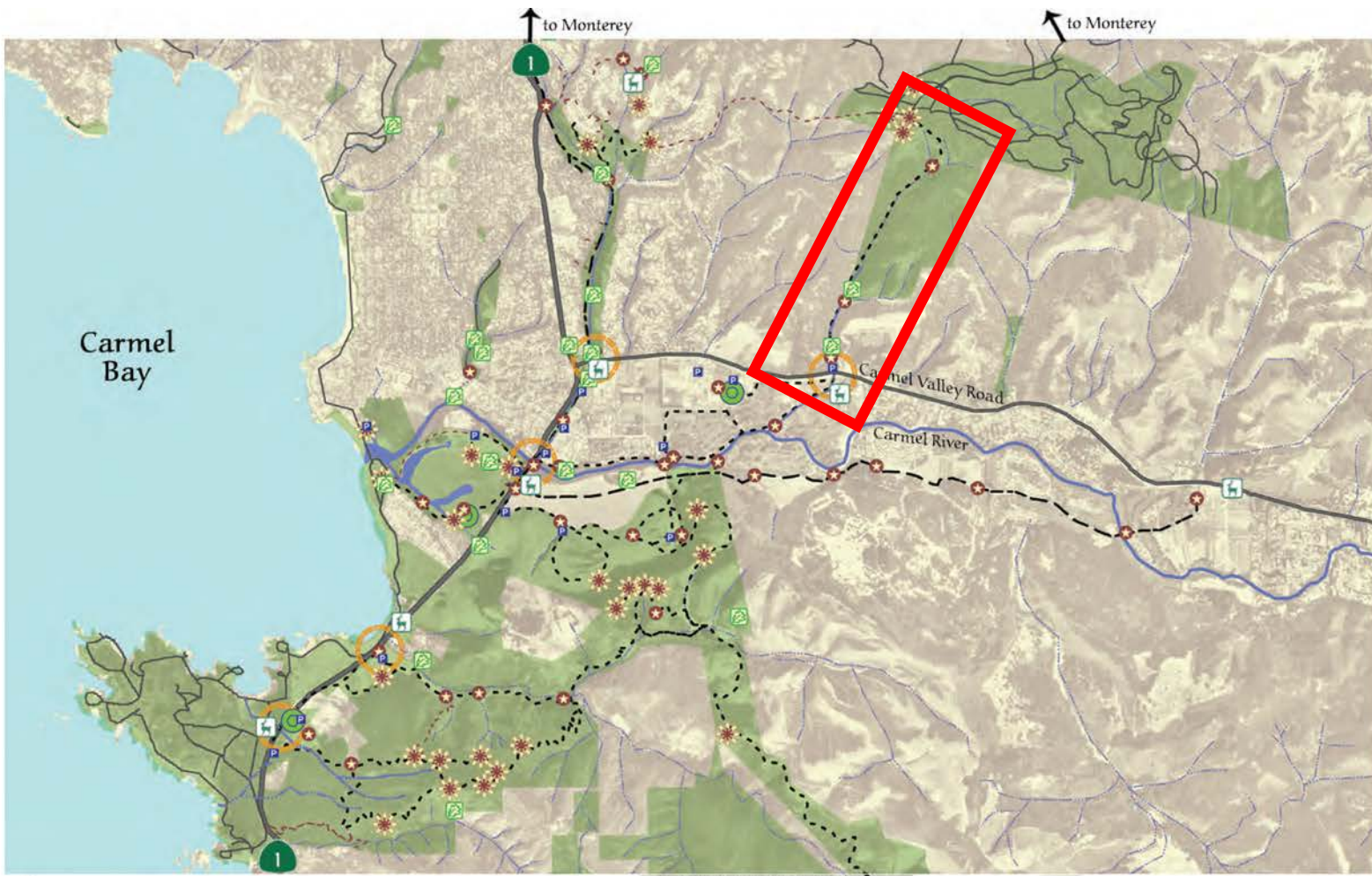
A 2005 visioning document laid out the key reasons why a Martin Canyon connection is important - because it is a **crucial link in a much larger regional opportunity network**, for people, wildlife, and water.

- Critical Corridors**
- Public Open Space 
- Human Corridor 
- Wildlife Corridor 
- Carmel River 
- Major Roads 



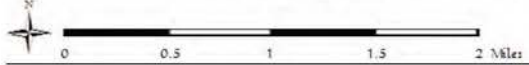
# 2005 Vision Plan for Carmel River Parkway

(Produced by Cal Poly Pomona students for BSLT)



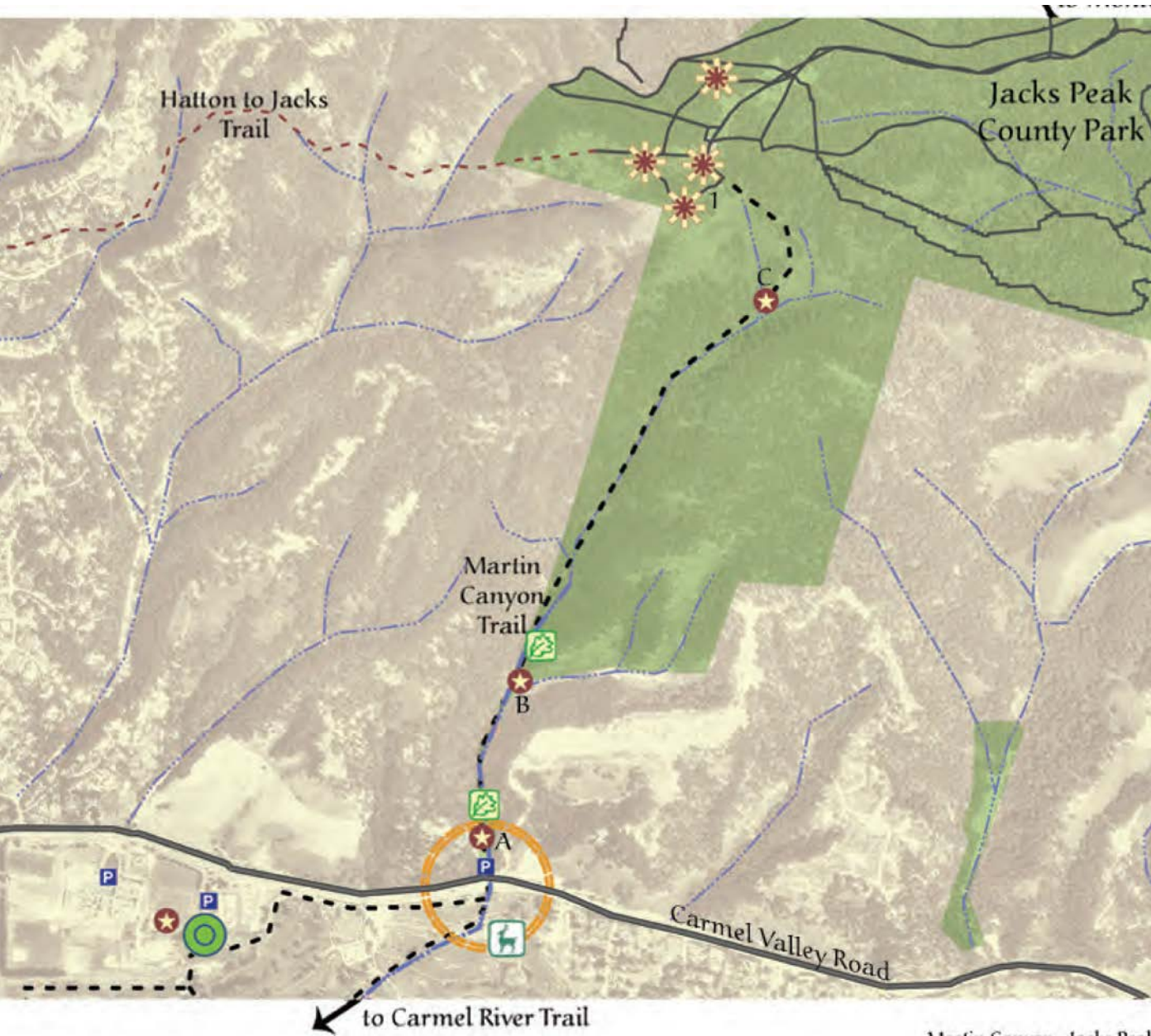
## Project Design

- Public Open Space
- Discovery Points
- Education Sites
- Potential Parking
- Revegetation Areas
- Stream Restoration
- Viewpoints
- Wildlife Pinch Points
- Key Connections
- Bikeways
- Priority Trails
- Secondary Trails
- Existing Trails
- Major Roads
- Carmel River
- Streams



# 2005 Vision Plan for Carmel River Parkway

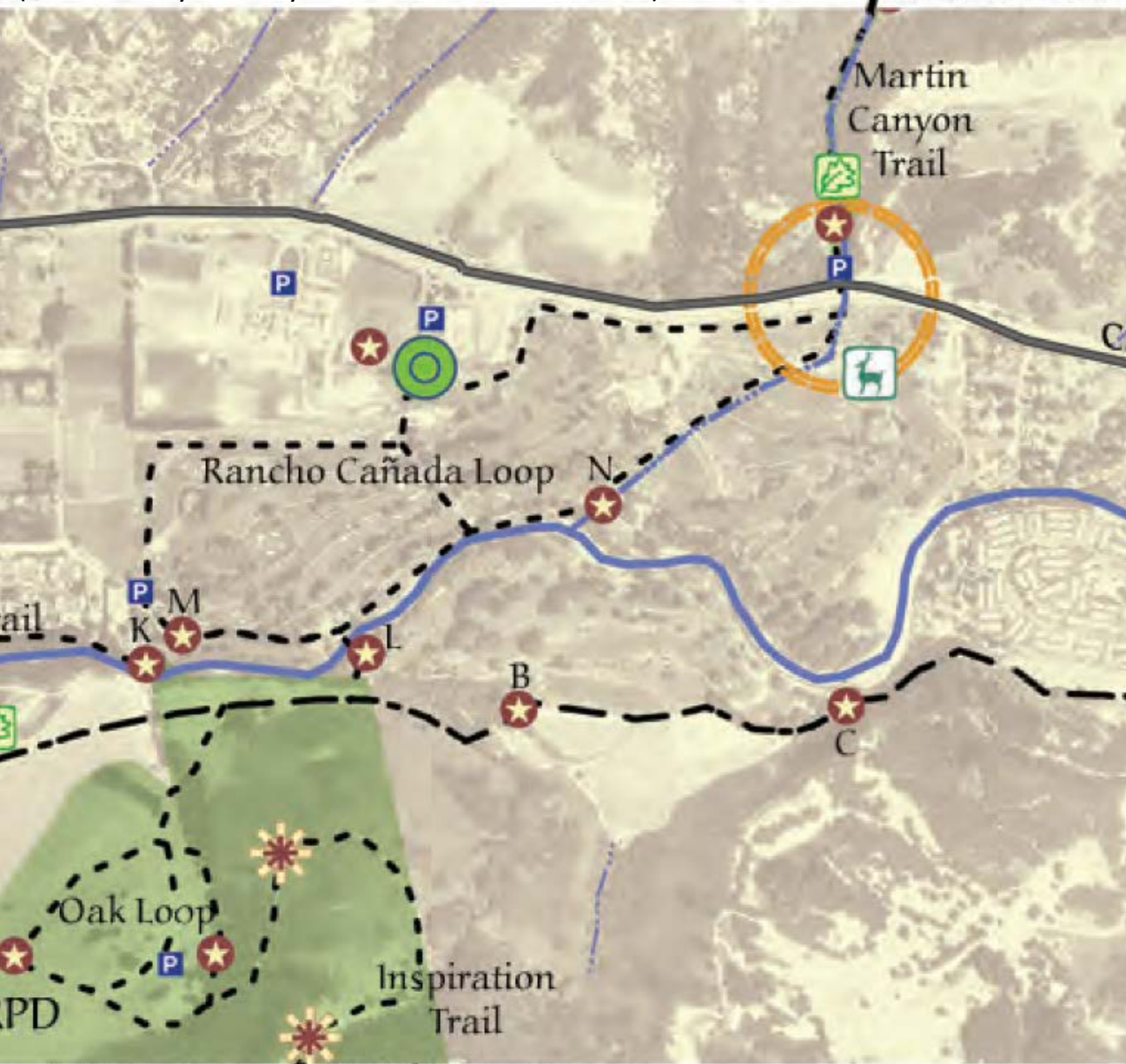
(Produced by Cal Poly Pomona students for BSLT)



## Martin Canyon - Jacks Peak Sub-region

- ★ Discovery Points
- Education Sites
- P Potential Parking
- Revegetation Areas
- Stream Restoration
- ★ Viewpoints
- Wildlife Pinch Points
- Key Connections
- Bikeways
- Priority Trails
- Secondary Trails
- Existing Trails

2005 Vision Plan for Carmel River Parkway  
 (Produced by Cal Poly Pomona students for BSLT)



Mouth of the Valley Sub-region

-  Discovery Points
-  Education Sites
-  Potential Parking
-  Revegetation Areas
-  Stream Restoration
-  Viewpoints
-  Wildlife Pinch Points
-  Key Connections
-  Bikeways
-  Priority Trails

to Point Lobos Ranch

to Palo Corona Backcountry



# 2005 Vision Plan for Carmel River Parkway

(Produced by Cal Poly Pomona students for BSLT)

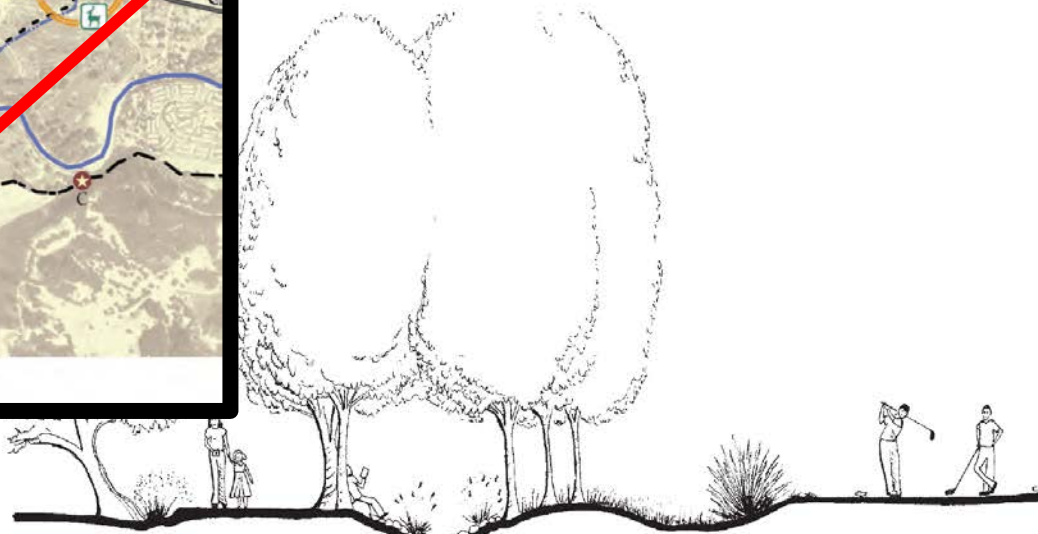
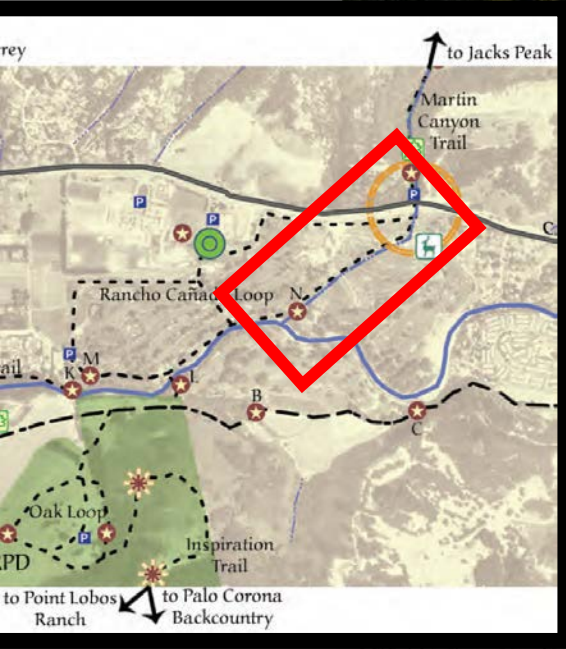
Daylighting Martin Canyon Creek should be a top priority for the re-use of the former Rancho Canada gold course. The idea was in play long before the retirement of the golf course.

Top: Rancho Canada Golf Club  
 Bottom: View into Martin Canyon from Rancho Canada Golf Club



## Martin Canyon Creek

The stream in Martin Canyon, currently culverted, could be daylighted and restored. This plan recommends daylighting the stream to flow across the middle of several fairways at the golf course before flowing into existing riparian habitats of the Carmel River. Wildlife corridor analysis identified the Rancho Canada Golf Club as being one of the most critical habitat linkages in the Carmel region. Daylighting Martin Canyon stream across the east course and constructing a bridge or culvert at Carmel Valley Road will provide a crucial wildlife corridor for the region and retain its function as a golf course.



8 Foot Trail    Restored Creek    Bioswale    Existing Golf Course

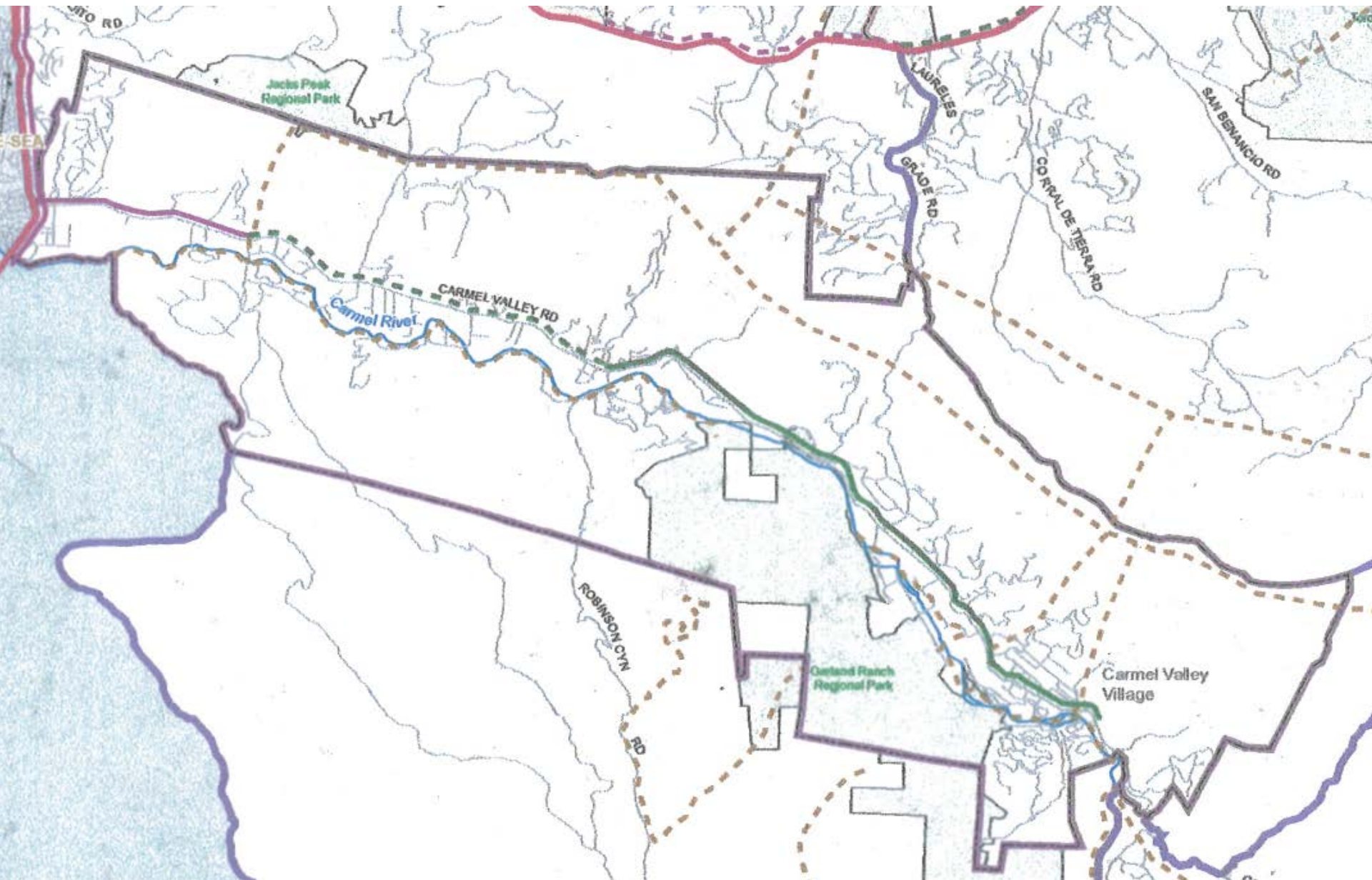
Martin Canyon Creek and Rancho Canada Loop Trail

*"There is no music like a little river's.... It takes the mind out-of-doors ... and ... it quiets a man down like saying his prayers".*

Robert Louis Stevenson

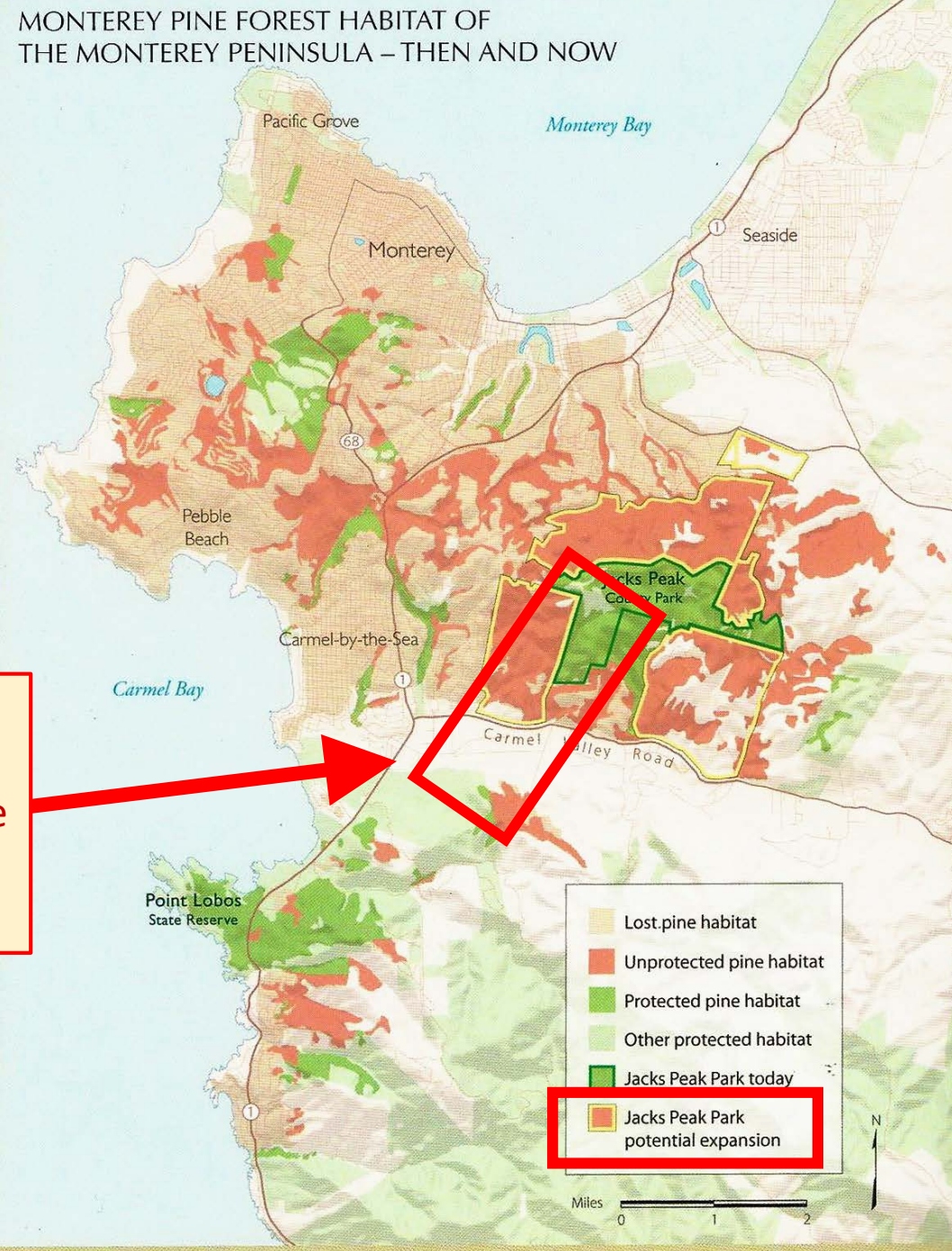


2006 re-cartography of 1984 data  
(same map in a previous slide, but included again here for timeline consistency)



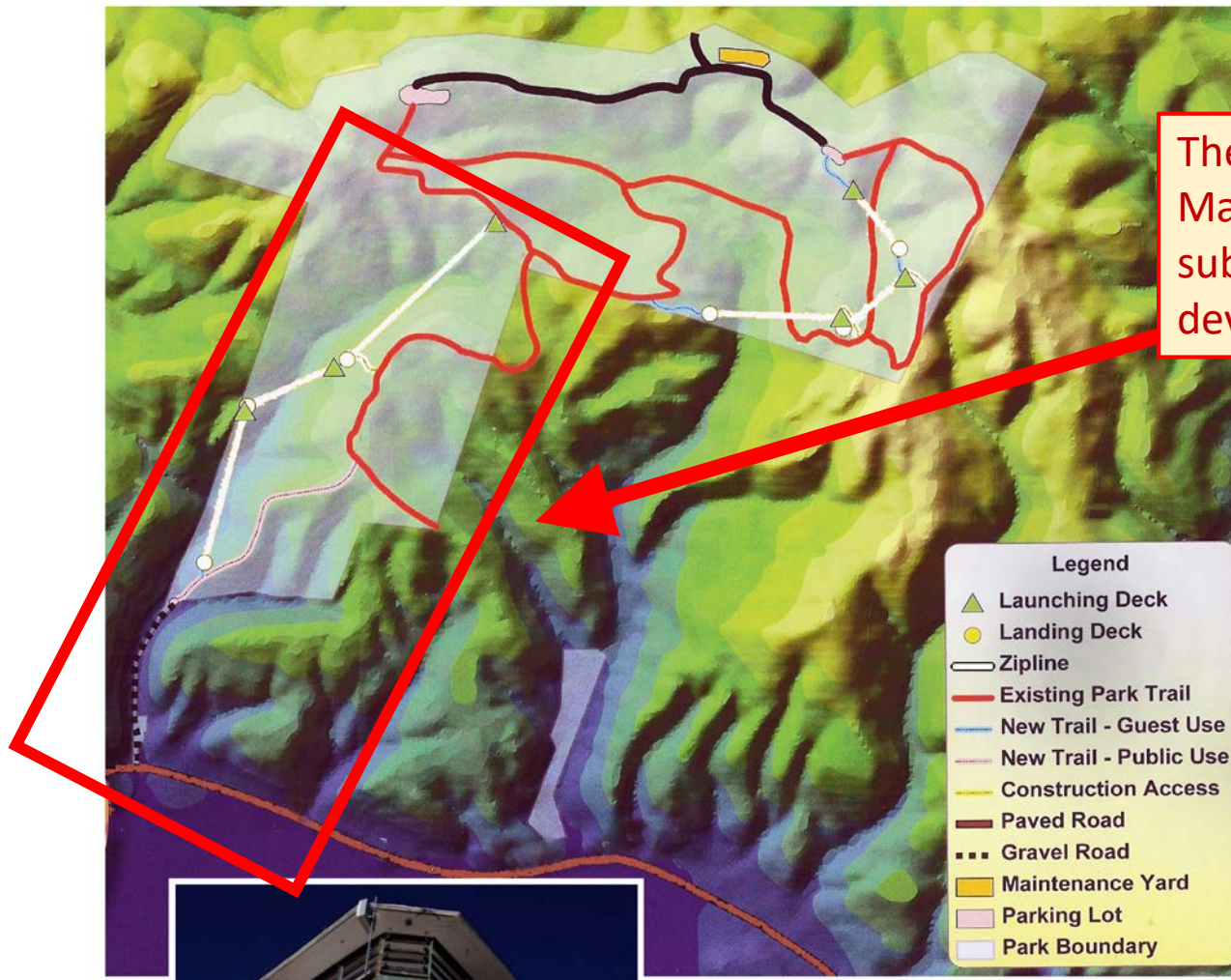
2011 book:  
"The Monterey Pine Forest"  
The Monterey Pine Forest Watch  
Pine Nut Press  
Bates, Dalessio, Nedeff, Stevens

A 2011 book prioritized the Martin Canyon area for potential future expansion of public land (the land on the west side of the canyon is church-owned).



# ~2012 ZipTrek zipline proposal for Martin Canyon (Jacks Peak)

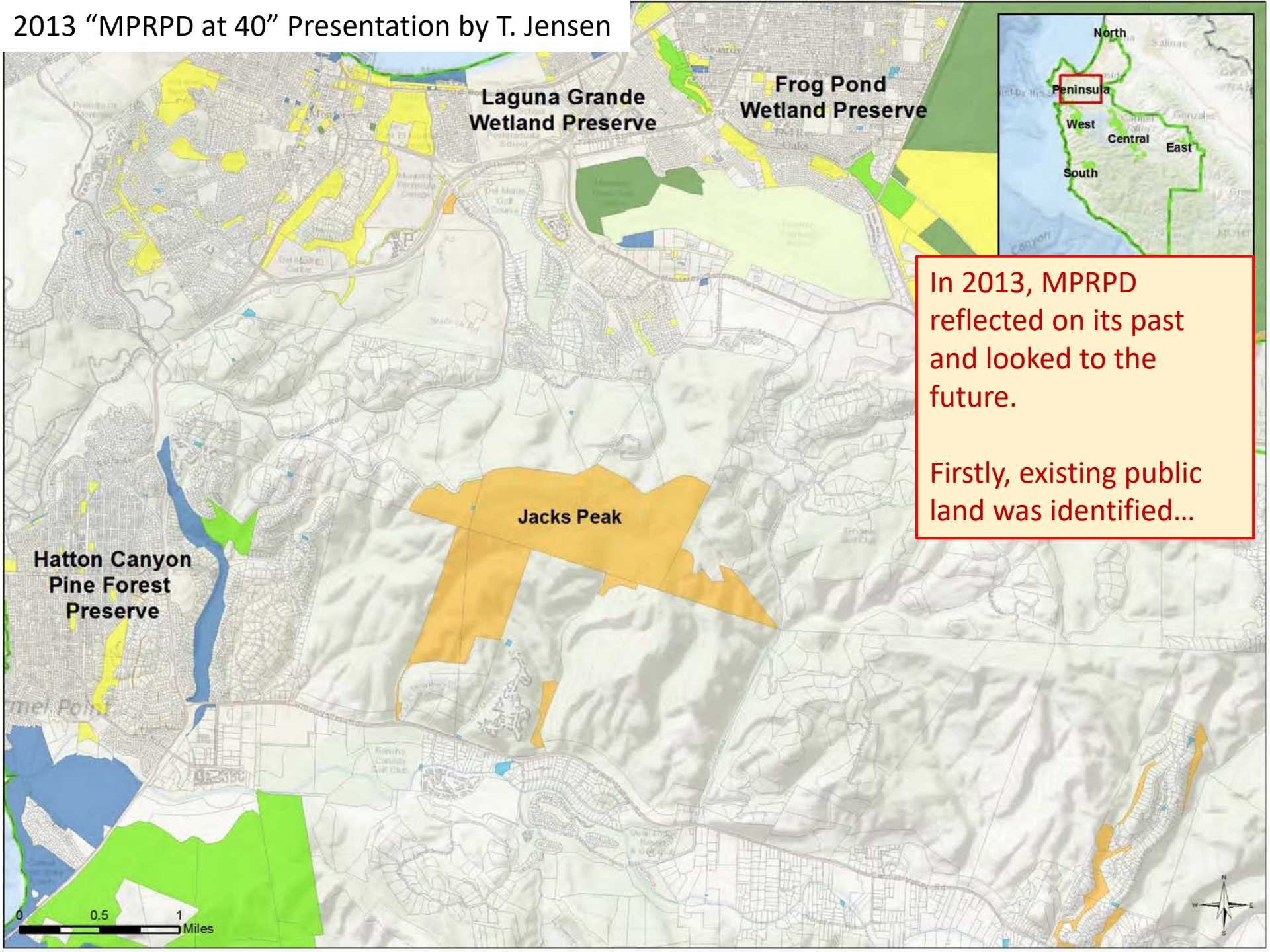
(Map reproduced from Carmel Valley Association newsletter, in turn reproduced from ZipTrek brochure)



The county considered Martin Canyon for substantial recreational development in 2012.

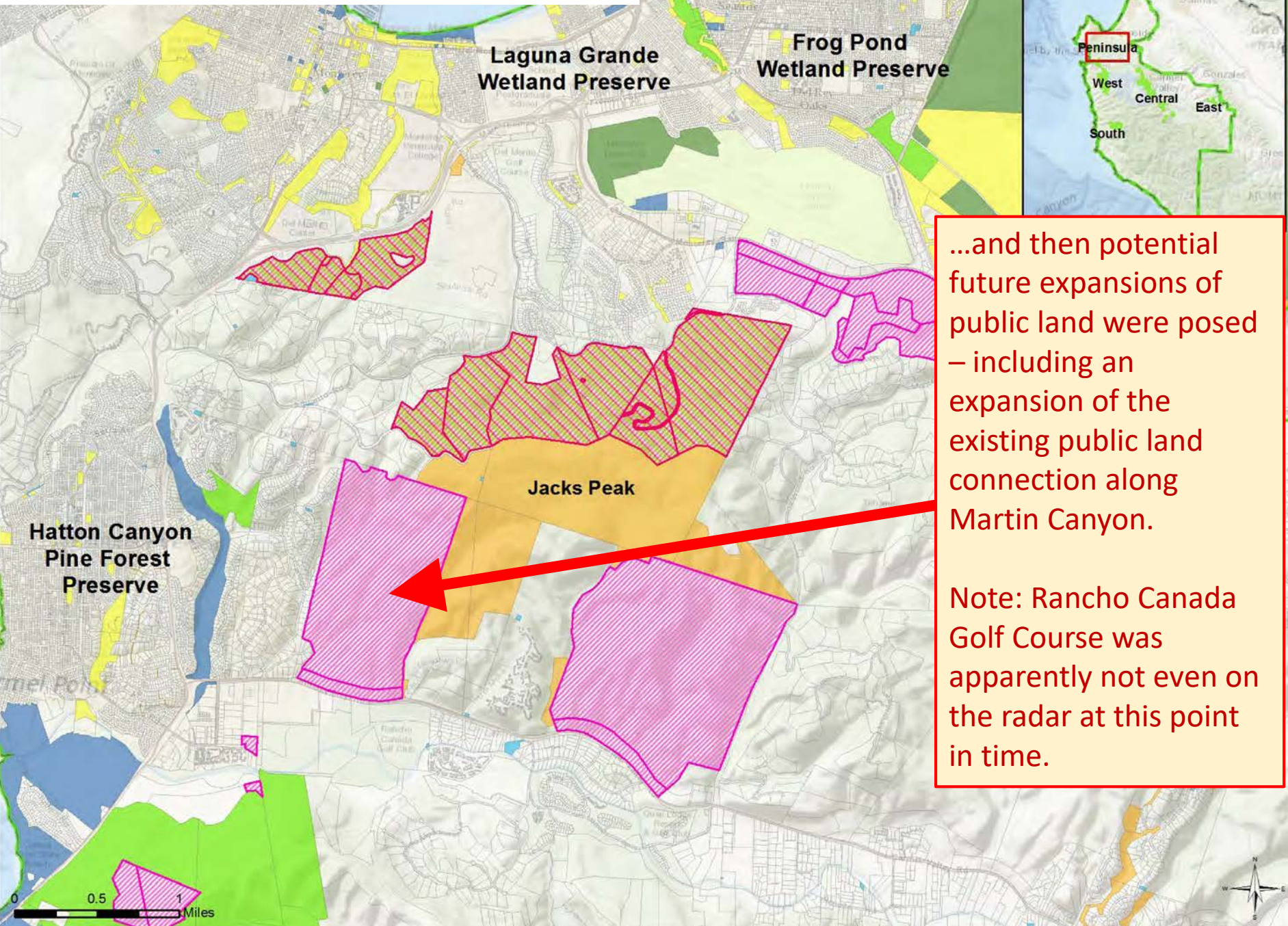
*Left: ZIPTREK's initial brochure shows the path of the six zipline segments (in white) proposed to carry aerial riders from Jacks Peak's east parking lot down into Martin Canyon, just west of Pacific Meadows.*

# 2013 "MPRPD at 40" Presentation by T. Jensen



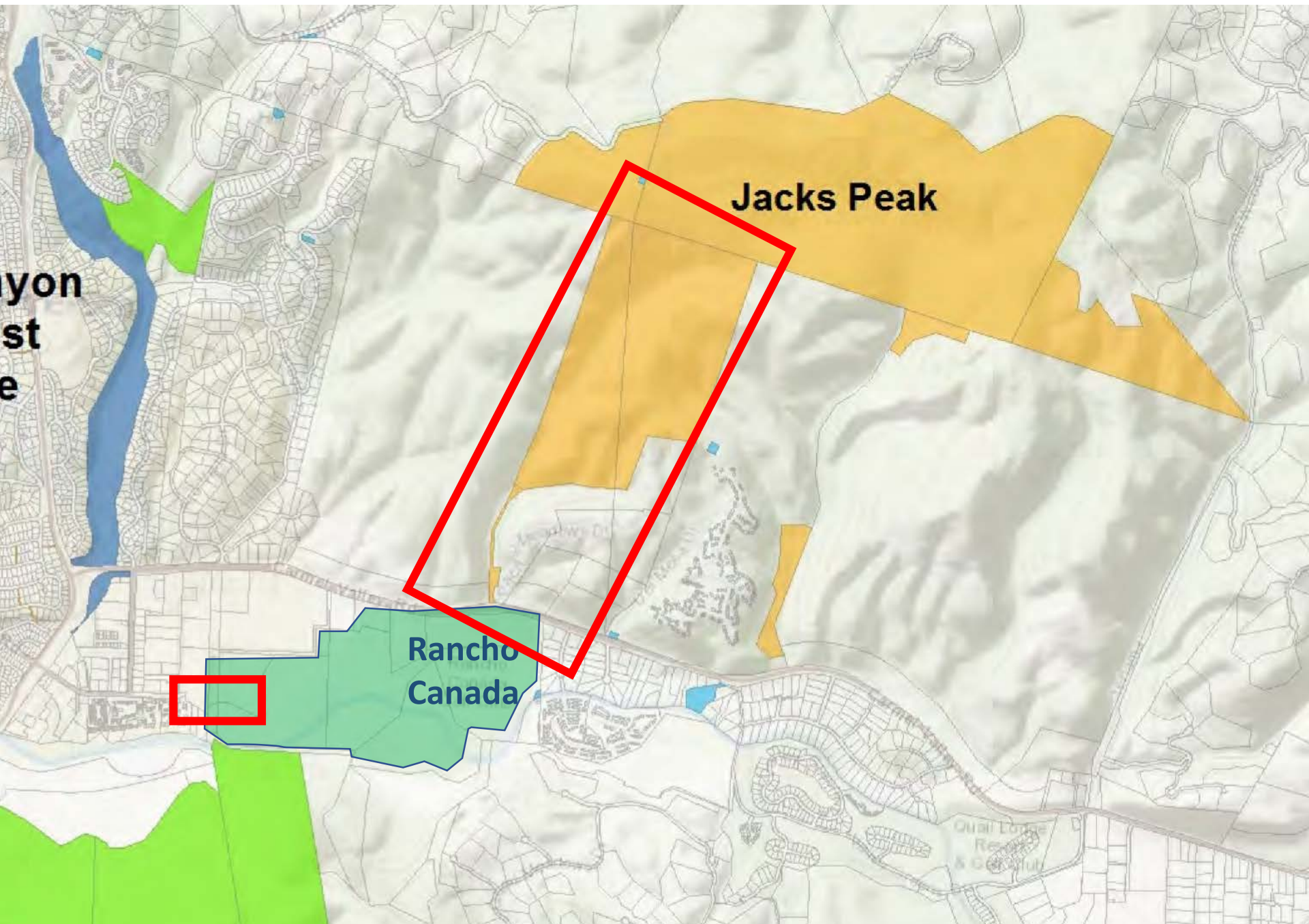
In 2013, MPRPD reflected on its past and looked to the future.

Firstly, existing public land was identified...



...and then potential future expansions of public land were posed – including an expansion of the existing public land connection along Martin Canyon.

Note: Rancho Canada Golf Course was apparently not even on the radar at this point in time.

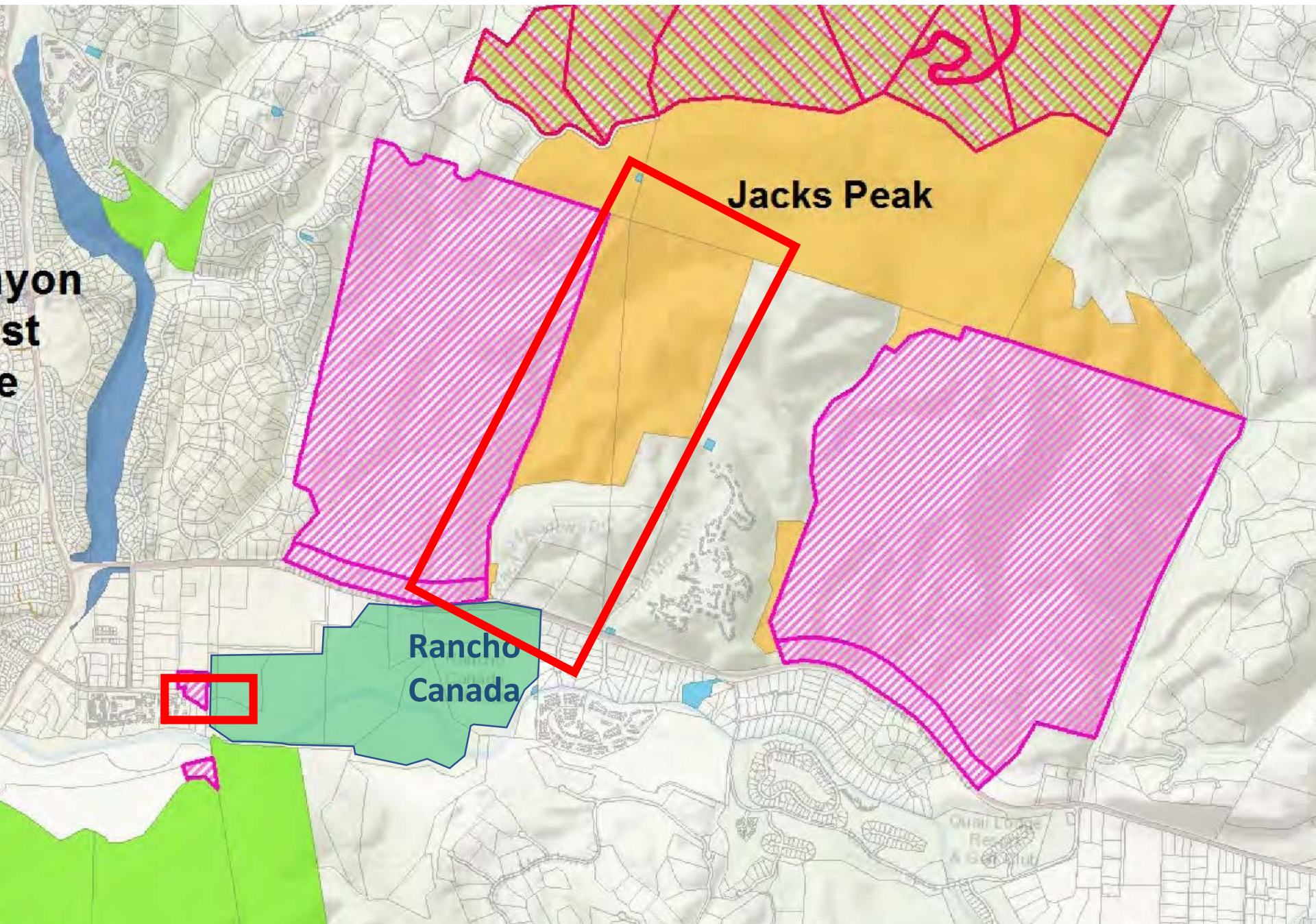


**Jacks Peak**

**Rancho  
Canada**

yon  
st  
e

Quail Lodge  
Res.  
& Golf Club



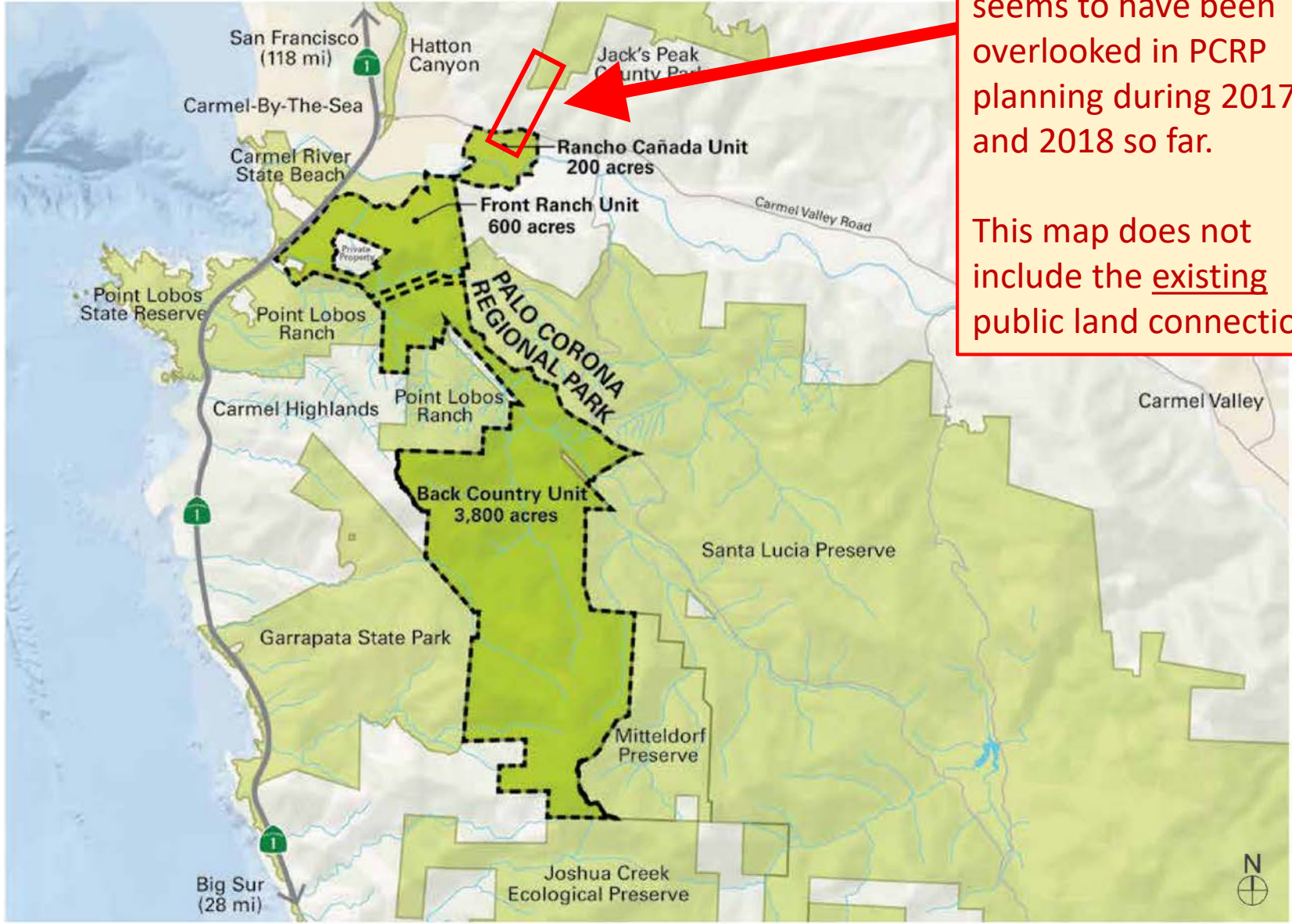
Jacks Peak

Rancho Canada





# PROJECT AREA



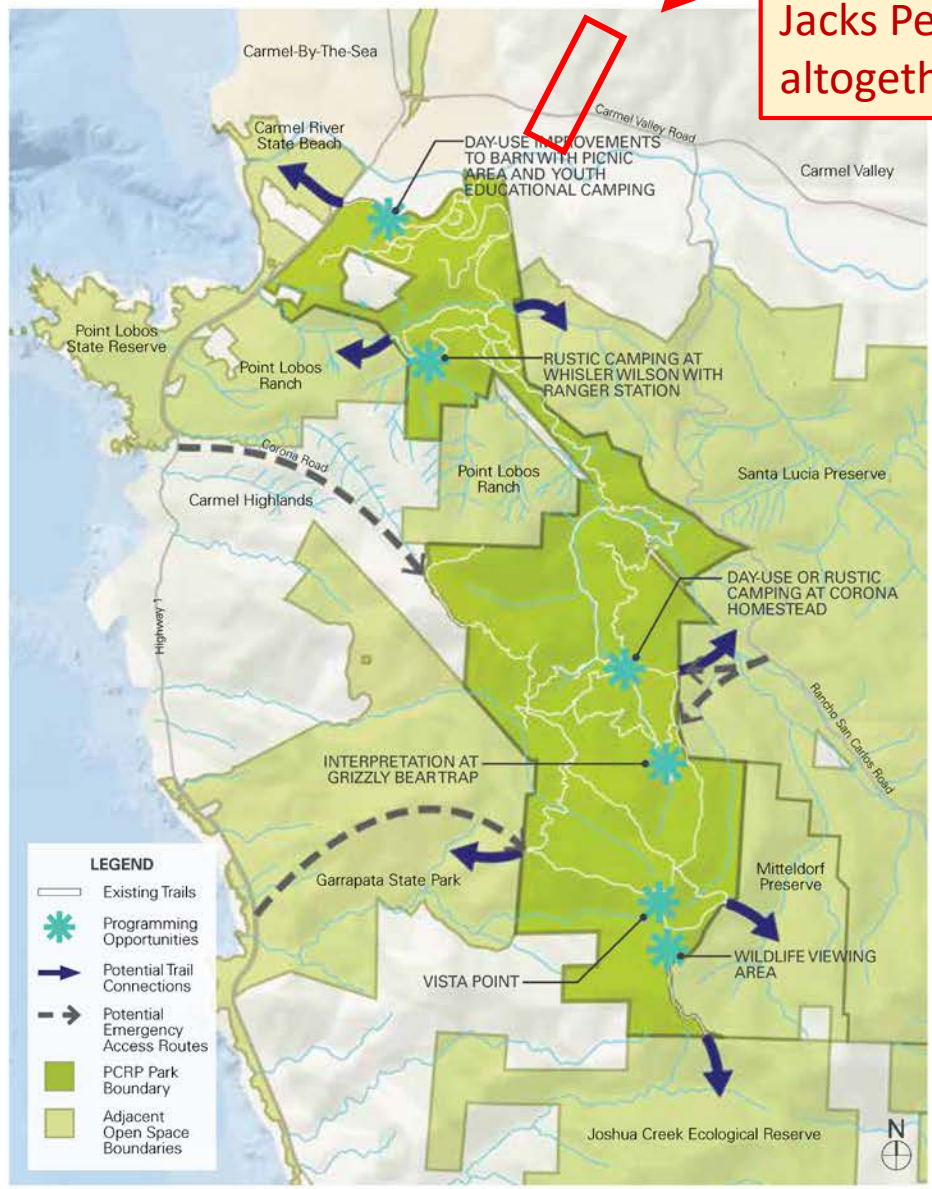
Oddly, Martin Canyon seems to have been overlooked in PCRGP planning during 2017 and 2018 so far.

This map does not include the existing public land connection.

# PALO CORONA REGIONAL PARK

This map leaves out Jacks Peak altogether

- Hiking and trail connectivity to adjacent parks and open space
- Limited, permit-only rustic backpacking sites
- On-site ranger staff to patrol park full-time
- Mountain bike, equestrian, and multi-use trails
- Research and Educational Opportunities

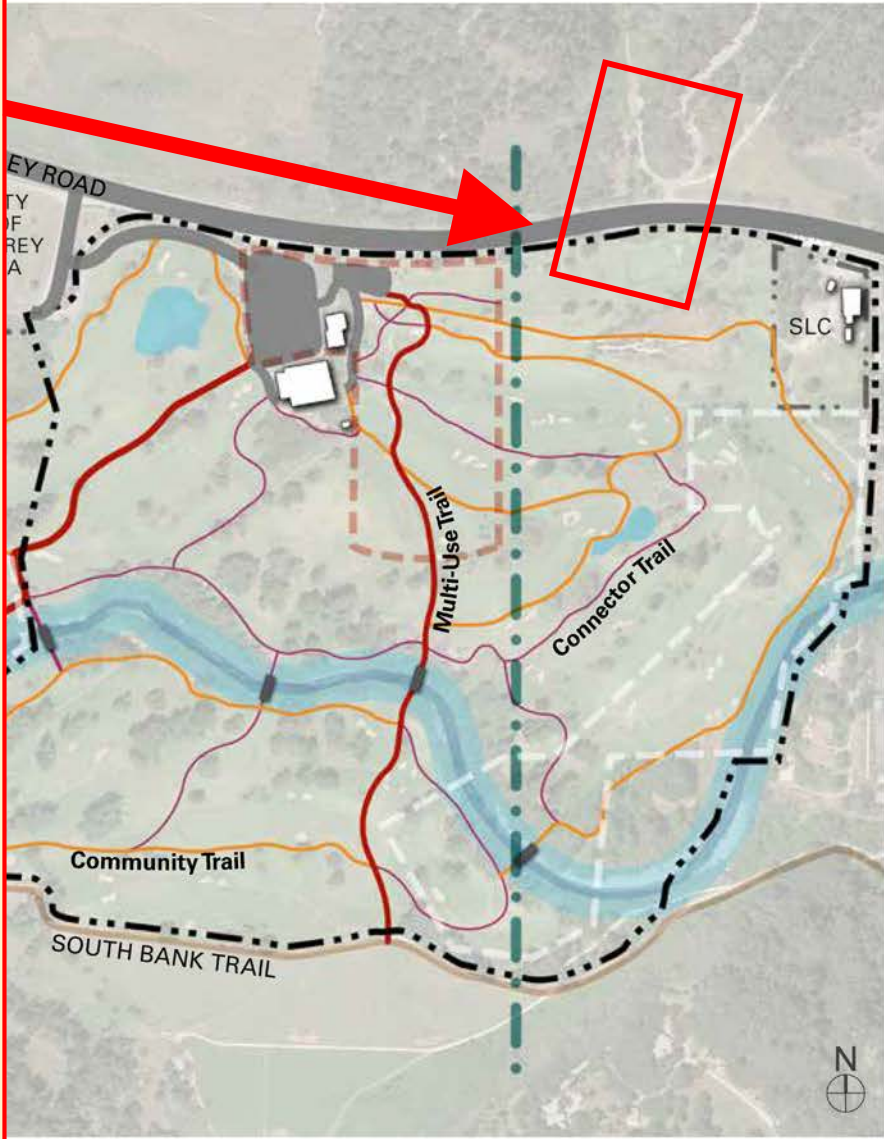


# RANCHO CAÑADA UNIT - TRAILS DIAGRAM

This map designs a trail system, but shows no awareness of the existing trail in Martin Canyon or forward planning to someday connect to Martin Canyon.

It also doesn't show Martin Canyon Creek, either in its present form (as a storm drain?), or its potential future return to a more-natural state (as was suggested in 2005).

The map should show existing trails, a proposed underpass, and a proposed daylighted creek.

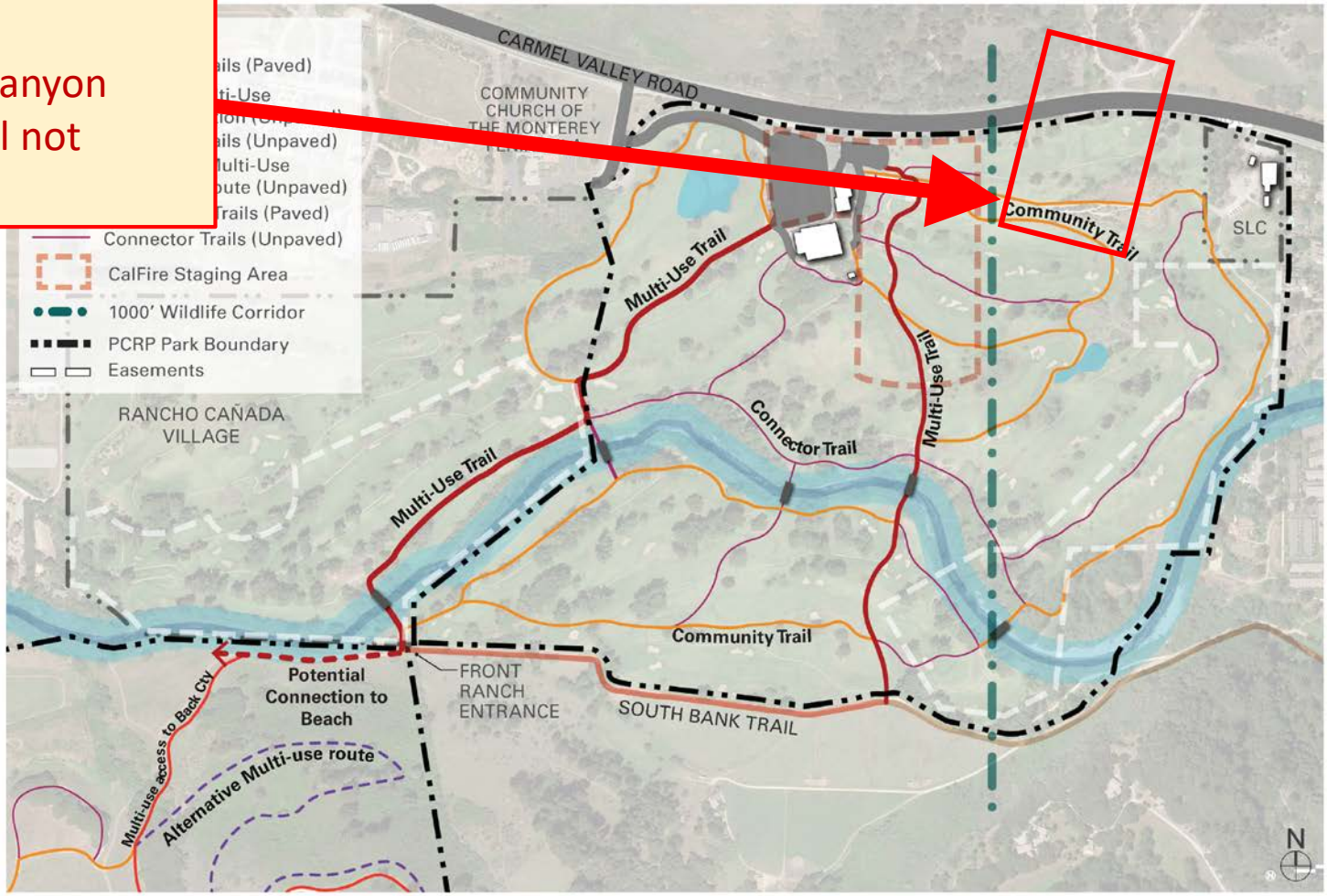


- Multi-Use Trails (Paved)
- - - Potential Multi-Use Trail Connection (Unpaved)
- - - Alternative Multi-Use Route (Unpaved)
- Community Trails (Paved)
- - - Connector Trails (Unpaved)
- CalFire Staging Area
- · - · - 1000' Wildlife Corridor
- PCRP Park Boundary
- Easements

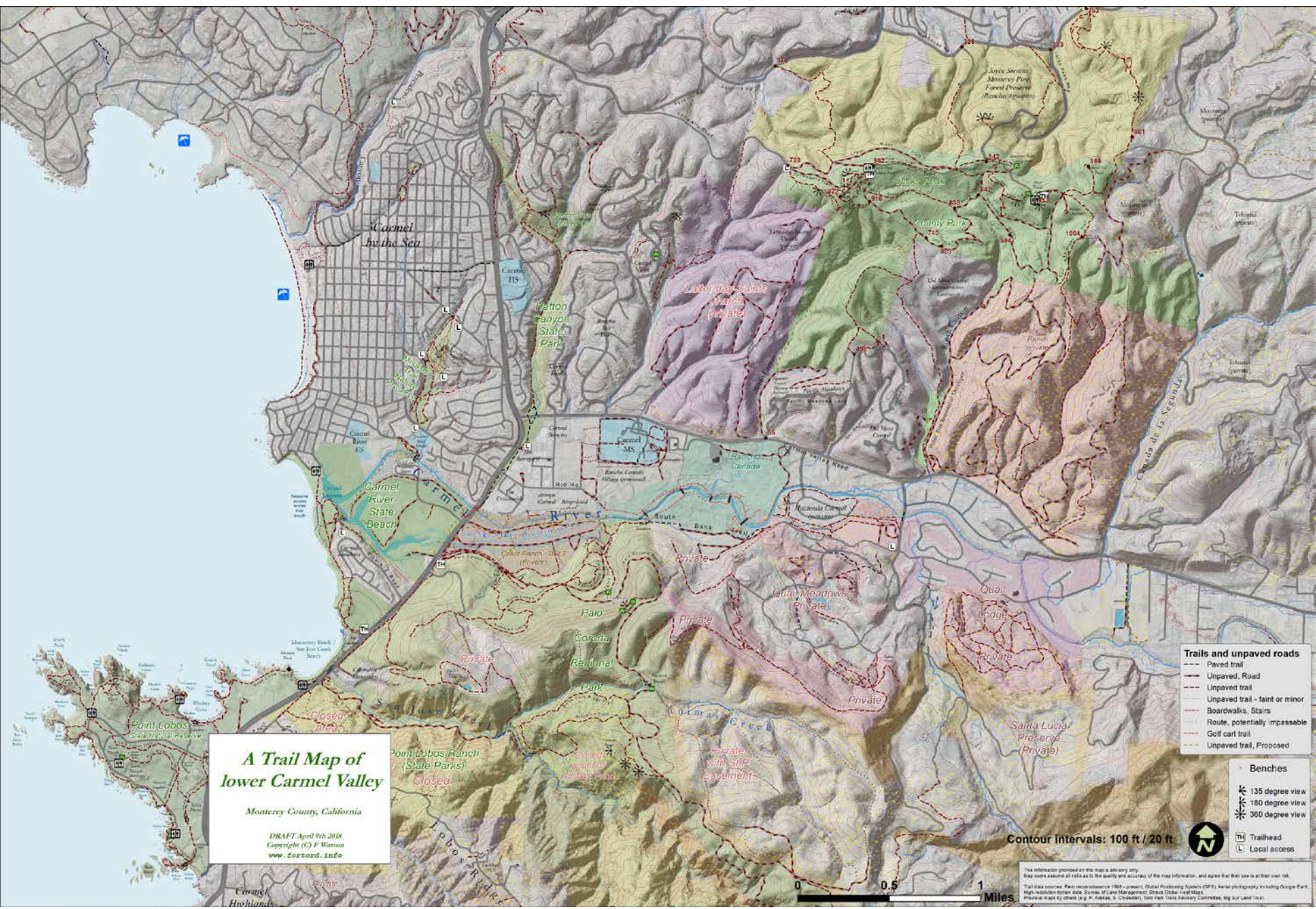
The April 2018 map differs slightly from the February 2018 map.  
But the Martin Canyon connection is still not recognized.

# RANCHO CAÑADA UNIT - TRAILS DIAGRAM

April Board Meeting



# 2018 Mapping by Watson – wider area



**A Trail Map of  
lower Carmel Valley**  
Monterey County, California

DRAFT April 9th 2018  
Copyright (C) F. Watson  
www.fortzord.info

- Trails and unpaved roads**
- Paved trail
  - Unpaved Road
  - Unpaved trail
  - Unpaved trail - faint or minor
  - Boardwalks, Stairs
  - Route, potentially impassible
  - Golf cart trail
  - Unpaved trail, Proposed

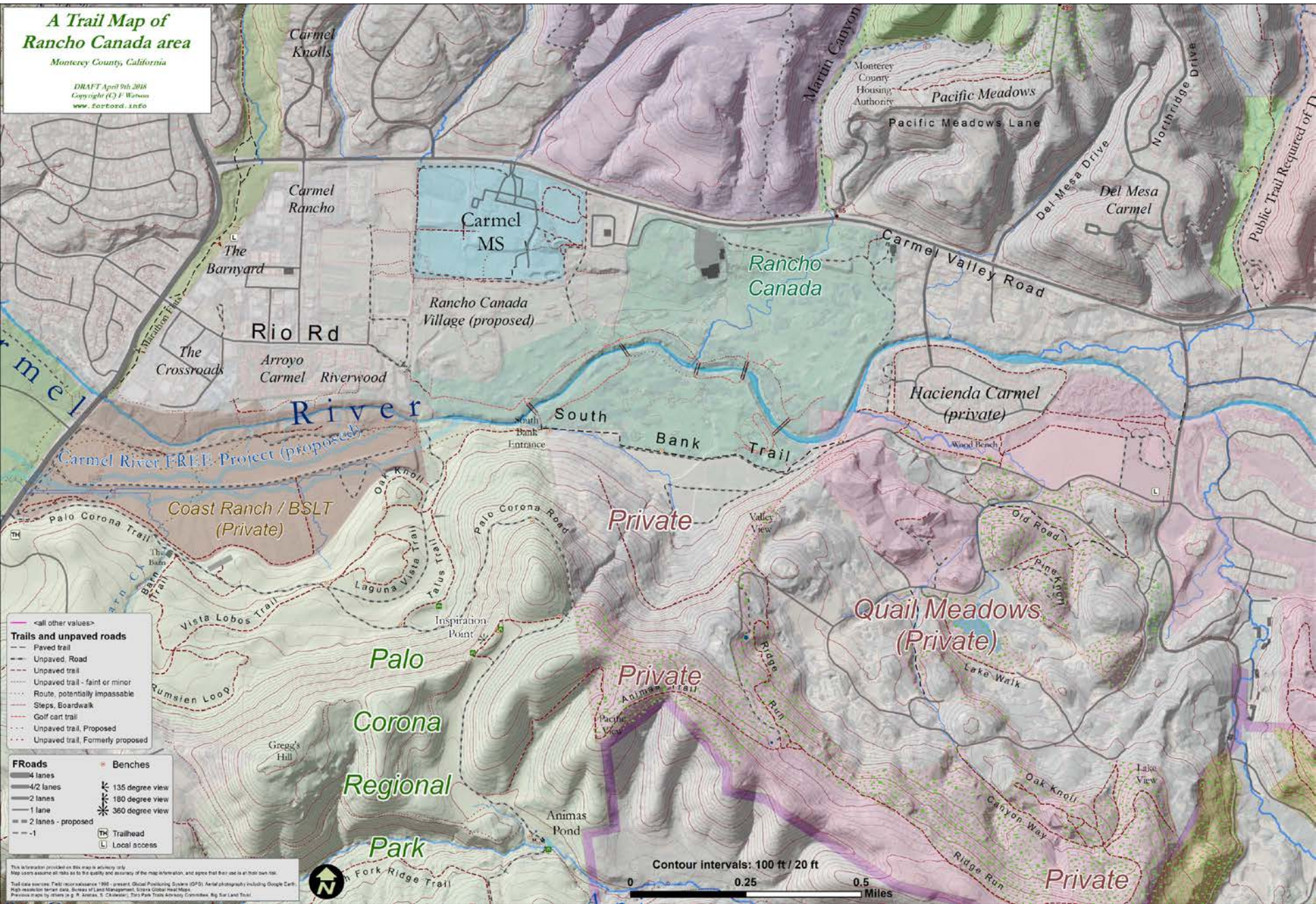
- Benches
- ☼ 135 degree view
- ☼ 180 degree view
- ☼ 360 degree view
- TH Trailhead
- L Local access

Contour intervals: 100 ft / 20 ft

This information presented on this map is advisory only. Map users assume all risks as to the quality and accuracy of the map information, and agree that their use is at their own risk. This data is derived from the National Aeronautics and Space Administration (NASA) Landsat satellite imagery, Global Positioning System (GPS) aerial photography including Google Earth, high resolution terrain data, Bureau of Land Management, Street View data, and other sources. The map is a work of art and is not intended to be used for any purpose other than that for which it was created. The map is a work of art and is not intended to be used for any purpose other than that for which it was created. The map is a work of art and is not intended to be used for any purpose other than that for which it was created.

0 0.5 1 Miles

# 2018 Mapping by Watson – zoomed in a bit



# 2018 Mapping by Watson – includes 2ft contours

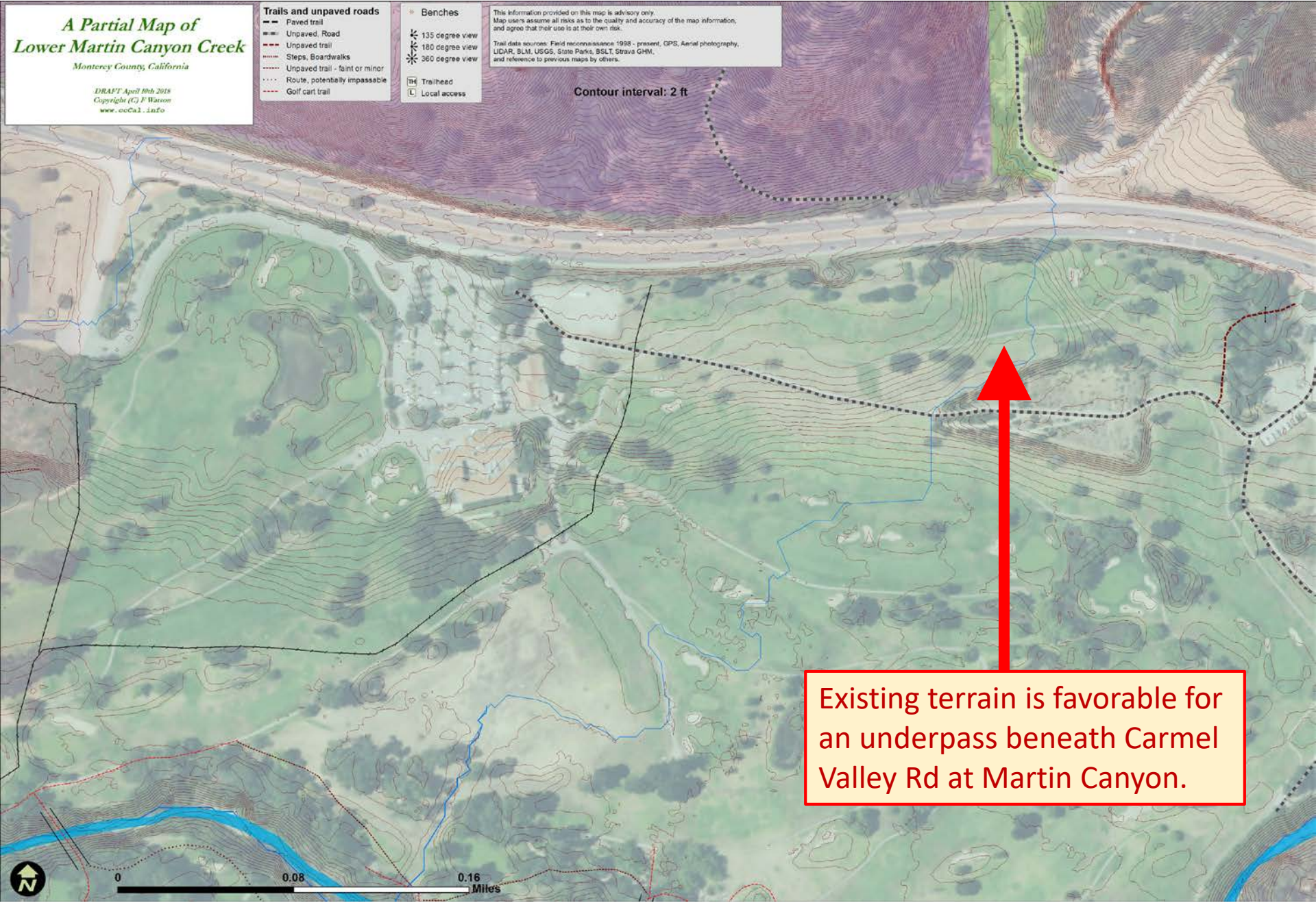
## A Partial Map of Lower Martin Canyon Creek

Monterey County, California  
DRAFT April 19th 2018  
Copyright (C) F. Watson  
www.ccCal.info

- Trails and unpaved roads**
  - Paved trail
  - Unpaved Road
  - Unpaved trail
  - Steps, Boardwalks
  - Unpaved trail - faint or minor
  - Route, potentially impassable
  - Golf cart trail
- Benches**
  - 135 degree view
  - 180 degree view
  - 360 degree view
- Trailhead**
- Local access**

This information provided on this map is advisory only. Map users assume all risks as to the quality and accuracy of the map information, and agree that their use is at their own risk.  
Trail data sources: Field reconnaissance 1998 - present, GPS, Aerial photography, LIDAR, BLM, USGS, State Parks, BSLT, Strava GHM, and reference to previous maps by others.

Contour interval: 2 ft



Existing terrain is favorable for an underpass beneath Carmel Valley Rd at Martin Canyon.