

OWNER'S CERTIFICATE

WE HEREBY CERTIFY THAT WE ARE THE OWNERS OF, OR HAVE SOME RIGHT, TITLE OR INTEREST IN AND TO, THE REAL PROPERTY INCLUDED WITHIN THE SUBDIVISION SHOWN UPON THIS MAP, AND THAT WE ARE THE ONLY PERSONS WHOSE CONSENT IS NECESSARY TO PASS A CLEAR TITLE TO SAID PROPERTY, AND WE CONSENT TO THE PREPARATION AND RECORDATION OF SAID MAP AND SUBDIVISION AS SHOWN WITHIN THE SUBDIVISION BOUNDARY LINES.

WE ALSO HEREBY DEDICATE FOR PUBLIC USE EASEMENTS FOR PUBLIC UTILITIES INCLUDING BUT NOT LIMITED TO ELECTRICITY, GAS, COMMUNICATION, WATER AND THEIR NECESSARY APPURTENANCES ON, OR OVER OR UNDER THOSE CERTAIN STRIPS OF LAND DESIGNATED AS "PUBLIC UTILITIES EASEMENT", "BOOTS ROAD", "EL CAMINO NUEVO", "HIDDEN MESA PLACE", "HIDDEN MESA COURT", AND "DRIVENWAY EASEMENT", AS SHOWN ON SAID MAP WITHIN SAID SUBDIVISION; SUCH STRIPS OF LAND ARE TO BE KEPT OPEN AND FREE FROM BUILDINGS AND STRUCTURES NOT SERVING THE PURPOSE OF THE EASEMENTS. WE ALSO HEREBY DEDICATE FOR PUBLIC USE EASEMENTS FOR DRAINAGE, BOTH SURFACE AND UNDERGROUND AND THEIR NECESSARY APPURTENANCES ON AND UNDER THOSE CERTAIN STRIPS AND PARCELS OF LAND DESIGNATED "DRAINAGE EASEMENTS" AS SHOWN ON SAID MAP WITHIN SAID SUBDIVISION; SUCH STRIPS OF LAND ARE TO BE KEPT OPEN AND FREE FROM BUILDINGS AND STRUCTURES NOT SERVING THE PURPOSES OF THE EASEMENTS.

WE ALSO HEREBY DEDICATE FOR PUBLIC USE, TRAIL EASEMENTS FOR RIDING AND HIKING WITHIN THE RIGHTS-OF-WAYS FOR BOOTS ROAD, EL CAMINO NUEVO; AND HIDDEN MESA PLACE AS SUCH RIGHTS-OF-WAYS ARE SHOWN ON SAID MAP WITHIN SAID SUBDIVISION.

WE ALSO HEREBY DEDICATE FOR PUBLIC USE EASEMENTS FOR THE FLOW OR STORAGE OF WATER OVER THOSE CERTAIN STRIPS AND PARCELS OF LAND DESIGNATED AS "NATURAL DRAINAGE EASEMENTS" AND "OPEN SPACE" AS SHOWN ON SAID MAP WITHIN SAID SUBDIVISION; SUCH STRIPS AND PARCELS OF LAND ARE TO BE KEPT OPEN AND FREE FROM BUILDINGS AND STRUCTURES EXCEPT FLOOD CONTROL STRUCTURES, AND SHALL BE MAINTAINED IN THEIR NATURAL STATE.

WE ALSO HEREBY RELINQUISH TO THE COUNTY OF MONTEREY ANY AND ALL ABUTTERS RIGHTS, OF ACCESS ALONG THE NORTHERLY BOUNDARY OF PARCEL B AS SHOWN ON SAID MAP.

Edward F. Hogan
MESA HILLS LAND COMPANY, INC., A CALIFORNIA CORPORATION
ED HOGAN, PRESIDENT

THE SIGNATURES OF THE FOLLOWING ARE NOT REQUIRED AS THEY HOLD ONLY CERTAIN INTERESTS THAT CANNOT RIPEN INTO A FEE:

1. RANCHO TIERRA GRANDE ASSOCIATION, A NON-PROFIT CALIFORNIA CORPORATION, AS EASEMENT HOLDER UNDER INSTRUMENT RECORDED DECEMBER 27, 1968, REEL 586, OFFICIAL RECORDS, PAGE 825.
2. INDIAN RIDGE DEVELOPMENT CORP., A MASSACHUSETTS CORPORATION, AS EASEMENT HOLDER UNDER INSTRUMENT RECORDED JANUARY 29, 1969 ON REEL 591, OFFICIAL RECORDS, PAGE 86, AND RECORDED JANUARY 9, 1970 ON REEL 635, OFFICIAL RECORDS, PAGE 166.
3. UTAH CONSTRUCTION AND MINING CO., AS EASEMENT HOLDER UNDER INSTRUMENT, RECORDED JULY 6, 1970 IN REEL 657, OFFICIAL RECORDS, PAGE 135, AND ON REEL 657, OFFICIAL RECORDS, PAGE 148; RECORDED DECEMBER 2, 1970 ON REEL 677, OFFICIAL RECORDS PAGE 209; RECORDED DECEMBER 2, 1970 ON REEL 677, OFFICIAL RECORDS, PAGE 212; RECORDED DECEMBER 2, 1970 ON REEL 677, OFFICIAL RECORDS, PAGE 214; AND RECORDED DECEMBER 2, 1970 ON REEL 677, OFFICIAL RECORDS, AT PAGE 216.
4. EDWARD F. HOGAN AND MARGARET M. HOGAN, AS EASEMENT HOLDERS UNDER INSTRUMENT RECORDED JULY 6, 1970 ON REEL 657, OFFICIAL RECORDS, PAGE 151; RECORDED SEPTEMBER 17, 1970 ON REEL 666, OFFICIAL RECORDS, PAGE 947; AND RECORDED OCTOBER 29, 1970 ON REEL 672, OFFICIAL RECORDS, PAGE 1092.

5. HIDDEN HILLS WEST LTD., A LIMITED PARTNERSHIP, AS EASEMENT HOLDER UNDER INSTRUMENT RECORDED SEPTEMBER 17, 1970 ON REEL 666, OFFICIAL RECORDS, PAGE 950; AND RECORDED OCTOBER 29, 1970 ON REEL 672, OFFICIAL RECORDS, PAGE 1065.
6. MONTEREY PENINSULA UNIFIED SCHOOL DISTRICT, AS EASEMENT HOLDER UNDER INSTRUMENT RECORDED OCTOBER 26, 1970 ON REEL 672, OFFICIAL RECORDS, PAGE 356.
7. EDWARD R. REIMS, JR. AND MARY M. REIMS, AS EASEMENT HOLDERS UNDER INSTRUMENT RECORDED OCTOBER 29, 1970 ON REEL 672, OFFICIAL RECORDS, PAGE 1085.
8. INDIAN RIDGE DEVELOPMENT CORP., A MASSACHUSETTS CORPORATION AND STANDARD INTERNATIONAL CORPORATION, AND OHIO CORPORATION, AS EASEMENT HOLDERS UNDER INSTRUMENTS, RECORDED DECEMBER 8, 1971 ON REEL 740, OFFICIAL RECORDS, PAGE 540, AND RECORDED DECEMBER 8, 1971 ON REEL 740, OFFICIAL RECORDS, PAGE 550.
9. PACIFIC TELEPHONE AND TELEGRAPH COMPANY, AS EASEMENT HOLDER UNDER INSTRUMENT RECORDED DECEMBER 21, 1971 ON REEL 742, OFFICIAL RECORDS, PAGE 781.
10. COUNTY OF MONTEREY, AS EASEMENT HOLDER UNDER INSTRUMENT RECORDED FEBRUARY 24, 1972 ON REEL 755, OFFICIAL RECORDS, PAGE 419.
11. CARMEL VALLEY MUTUAL WATER COMPANY, A CALIFORNIA CORPORATION, AS EASEMENT HOLDER UNDER INSTRUMENT RECORDED DECEMBER 1, 1978 ON REEL 1294, OFFICIAL RECORDS, PAGE 452.
12. JACQUELINE M. HOGAN, AS EASEMENT HOLDER UNDER INSTRUMENT RECORDED JUNE 16, 1980, REEL 1413, OFFICIAL RECORDS, PAGE 1049.
13. PACIFIC GAS AND ELECTRIC COMPANY, A CALIFORNIA CORPORATION, AS EASEMENT HOLDER UNDER INSTRUMENT RECORDED MAY 29, 1981, REEL 1484, OFFICIAL RECORDS, PAGE 706.
14. LAURIE SHAFFI AND FRANCES SHAFFI, AS EASEMENT HOLDERS, UNDER INSTRUMENT RECORDED OCTOBER 12, 1980, REEL 1510, OFFICIAL RECORDS, PAGE 679.
15. EDWARD F. HOGAN, AS EASEMENT HOLDER, UNDER INSTRUMENT RECORDED JUNE 9, 1982, IN REEL 1557, OFFICIAL RECORDS, PAGE 1007.
16. STANDEX INTERNATIONAL CORPORATION, A DELAWARE CORPORATION, AS EASEMENT HOLDER UNDER INSTRUMENT RECORDED DECEMBER 2, 1983 ON REEL 1689, OFFICIAL RECORDS, PAGE 381.
17. PACIFIC GAS & ELECTRIC COMPANY, A CALIFORNIA CORPORATION, AS EASEMENT HOLDER UNDER INSTRUMENT RECORDED JANUARY 17, 1986, REEL 1919, OFFICIAL RECORDS, PAGE 955.
18. PACIFIC BELL, A CORPORATION, AS EASEMENT HOLDER UNDER INSTRUMENT RECORDED MARCH 24, 1986, REEL 1938, OFFICIAL RECORDS, PAGE 532.

ENGINEER'S CERTIFICATE

I, JOHN M. VAN ZANDER, REGISTERED CIVIL ENGINEER HEREBY CERTIFY THAT THIS MAP CORRECTLY REPRESENTS A SURVEY MADE BY ME OR UNDER MY DIRECTION DURING JULY, 1986, THAT THE SURVEY IS TRUE AND COMPLETE AS SHOWN; THAT ALL THE MONUMENTS ARE OF THE CHARACTER AND OCCUPY THE POSITIONS INDICATED, OR THEY WILL BE SET IN SUCH POSITIONS ON OR BEFORE ONE YEAR AFTER THE RECORDATION OF THIS MAP BY THE MONTEREY COUNTY RECORDER. THE MONUMENTS ARE, OR WILL BE SUFFICIENT TO ENABLE THE SURVEY TO BE RETRACED.

(SIGNED) *John M. Van Zander*
R.C.E. NO. 15320
EXPIRATION DATE: 3-31-89

NOTARY CERTIFICATE

STATE OF CALIFORNIA S.S.
COUNTY OF MONTEREY

ON 21 August, 1986 BEFORE ME, THE UNDERSIGNED, A NOTARY PUBLIC IN AND FOR SAID STATE, PERSONALLY APPEARED Edward F. Hogan, PERSONALLY KNOWN TO ME (OR PROVED TO ME ON THE BASIS OF SATISFACTORY EVIDENCE) TO BE THE PERSONS WHO EXECUTED THE WITHIN INSTRUMENT AS Principal AND OR ON BEHALF OF THE CORPORATION HEREIN NAMED AND ACKNOWLEDGED TO ME THAT THE CORPORATION EXECUTED IT.

WITNESS MY HAND AND OFFICIAL SEAL.

SIGNATURE: *Priscilla R. Herrera*

NAME: (PRINTED) Priscilla R. Herrera



COUNTY SURVEYOR'S CERTIFICATE:

I, BRUCE W. McCLAIN, COUNTY SURVEYOR OF MONTEREY COUNTY, HEREBY CERTIFY THAT I HAVE EXAMINED THIS MAP; THAT THE SUBDIVISION AS SHOWN HEREON IS SUBSTANTIALLY THE SAME AS IT APPEARED ON THE TENTATIVE MAP, AND ANY APPROVED ALTERATIONS THEREOF AS APPROVED BY THE MONTEREY COUNTY BOARD OF SUPERVISORS, ON MARCH 12, 1985, THAT ALL THE PROVISIONS OF THE CALIFORNIA "SUBDIVISION MAP ACT", AS AMENDED, AND OF MONTEREY COUNTY ORDINANCE NO. 1713, HAVE BEEN COMPLIED WITH, AND THAT THIS MAP IS TECHNICALLY CORRECT.

Bruce W. McClain
COUNTY SURVEYOR, MONTEREY COUNTY, CALIFORNIA

COUNTY RECORDER'S CERTIFICATE

FILED THIS 21ST DAY OF OCTOBER, 1986, AT 12:00 PM IN VOLUME 16 OF CITIES AND TOWNS AT PAGE 4, AT THE REQUEST OF BESTOR ENGINEERS, INC.

ERNEST A. MAGGINI SERIAL NO. 55380
COUNTY RECORDER

BY *Priscilla R. Herrera* DEPUTY FEE: \$14.00

CERTIFICATE OF APPROVAL BY SECRETARY OF PLANNING COMMISSION:

I, ROBERT SLIMMON, JR., SECRETARY OF THE MONTEREY COUNTY PLANNING COMMISSION, HEREBY CERTIFY THAT I HAVE EXAMINED THIS MAP; THAT THE SUBDIVISION AS SHOWN HEREON IS SUBSTANTIALLY THE SAME AS IT APPEARED ON THE TENTATIVE MAP, AND ANY APPROVED ALTERATIONS THEREOF AS APPROVED BY THE MONTEREY COUNTY BOARD OF SUPERVISORS, ON MARCH 12, 1985; THAT ALL THE PROVISIONS OF THE CALIFORNIA "SUBDIVISION MAP ACT" AND MONTEREY COUNTY SUBDIVISION ORDINANCE NO. 1713 HAVE BEEN COMPLIED WITHIN.

Robert Slimmon, Jr.
SECRETARY, MONTEREY COUNTY PLANNING COMMISSION, COUNTY OF MONTEREY, STATE OF CALIFORNIA

CERTIFICATE OF CLERK OF BOARD OF SUPERVISORS:

I, ERNEST K. MORISHITA, CLERK OF THE BOARD OF SUPERVISORS OF MONTEREY COUNTY, HEREBY CERTIFY THAT SAID BOARD APPROVED THE WITHIN MAP ON THE DAY OF OCTOBER 14, 1986, AND ACCEPTED ON BEHALF OF THE PUBLIC, ALL OFFERS OF DEDICATION FOR PUBLIC USE, IN CONFORMITY WITH THE TERMS OF THE OFFER OF DEDICATION.

BY: ERNEST K. MORISHITA
CLERK OF THE BOARD OF SUPERVISORS OF THE COUNTY OF MONTEREY, STATE OF CALIFORNIA

BY: *Janece Lakensell*
DEPUTY

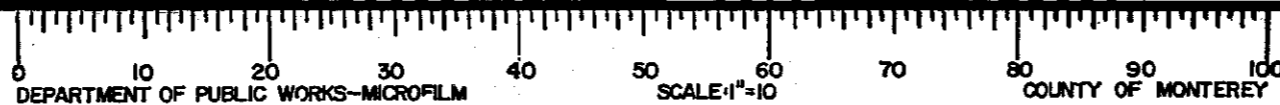
NOTES:

1. UNDERGROUND SERVICES ARE REQUIRED IN THIS SUBDIVISION IN ACCORDANCE WITH CHAPTER 19.12.140 (M) OF THE MONTEREY COUNTY CODE.
2. A GEOLOGIC REPORT HAS BEEN PREPARED FOR THIS SUBDIVISION BY OLIVER BOWEN AND IS INCLUDED AS PART OF THE MESA HILLS WEST SUPPLEMENTAL E.I.R.

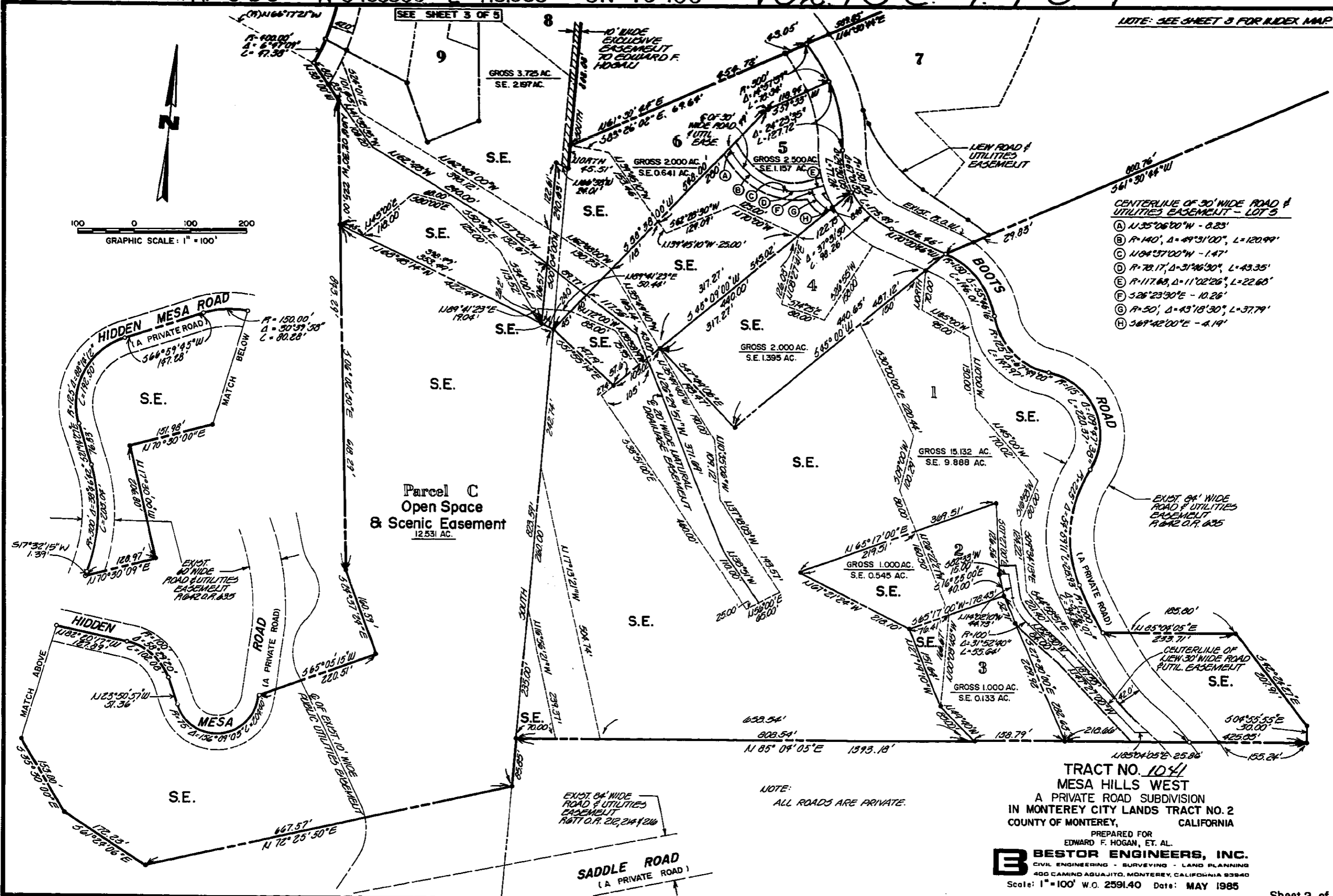
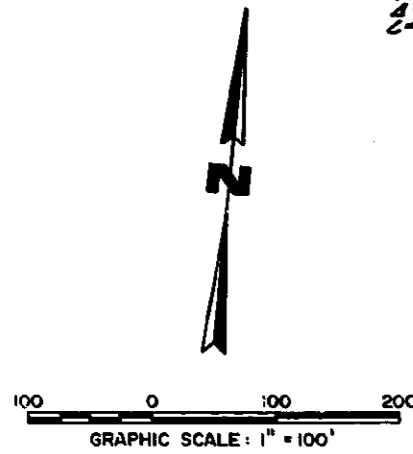
TRACT NO. 1041
MESA HILLS WEST
A PRIVATE ROAD SUBDIVISION
IN MONTEREY CITY LANDS TRACT NO. 2
COUNTY OF MONTEREY, CALIFORNIA

PREPARED FOR
EDWARD F. HOGAN, ET. AL.

B BESTOR ENGINEERS, INC.
CIVIL ENGINEERING - SURVEYING - LAND PLANNING
400 CAMINO AGUAJITO, MONTEREY, CALIFORNIA 93940
Scale: NONE W.O.2591.40 Date: MAY 1985



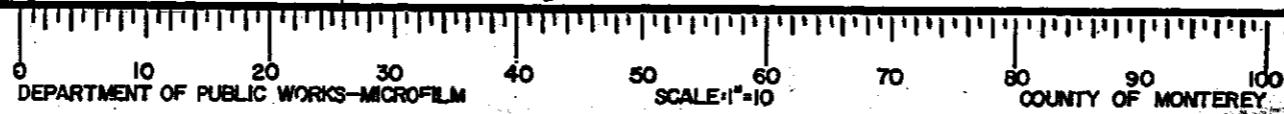
NOTE: SEE SHEET 3 FOR INDEX MAP

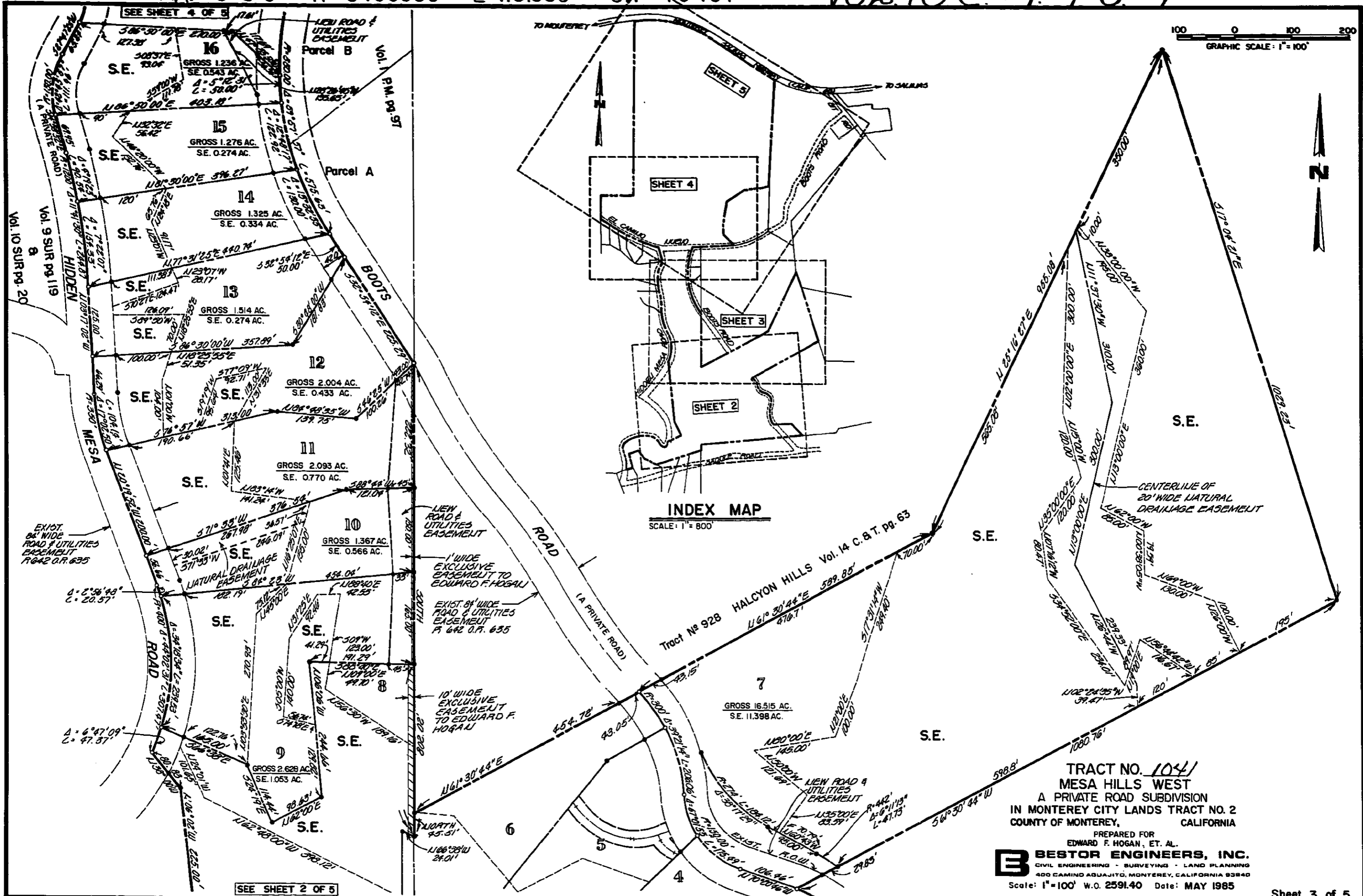


- CENTERLINE OF 30' WIDE ROAD & UTILITIES EASEMENT - LOT 3
- (A) $N 35^{\circ} 06' 00'' W - 8.23'$
 - (B) $R = 140', \Delta = 49^{\circ} 31' 00'', L = 120.99'$
 - (C) $N 04^{\circ} 37' 00'' W - 1.47'$
 - (D) $R = 78.17', \Delta = 31^{\circ} 46' 30'', L = 43.35'$
 - (E) $R = 117.68', \Delta = 11^{\circ} 02' 26'', L = 22.60'$
 - (F) $S 26^{\circ} 23' 30'' E - 10.26'$
 - (G) $R = 50', \Delta = 43^{\circ} 18' 30'', L = 37.79'$
 - (H) $S 69^{\circ} 42' 00'' E - 4.19'$

TRACT NO. 1041
MESA HILLS WEST
 A PRIVATE ROAD SUBDIVISION
 IN MONTEREY CITY LANDS TRACT NO. 2
 COUNTY OF MONTEREY, CALIFORNIA

PREPARED FOR
 EDWARD F. HOGAN, ET. AL.
BESTOR ENGINEERS, INC.
 CIVIL ENGINEERING - SURVEYING - LAND PLANNING
 400 CAMINO AGUAJITO, MONTEREY, CALIFORNIA 93940
 Scale: 1" = 100' W.O. 2591.40 Date: MAY 1985

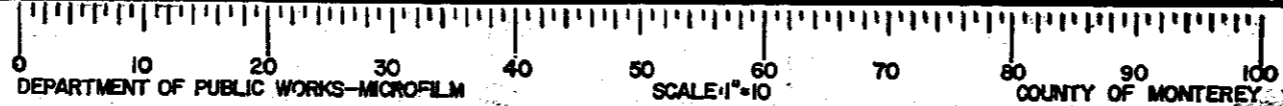




TRACT NO. 1041
MESA HILLS WEST
 A PRIVATE ROAD SUBDIVISION
 IN MONTEREY CITY LANDS TRACT NO. 2
 COUNTY OF MONTEREY, CALIFORNIA

PREPARED FOR
 EDWARD F. HOGAN, ET. AL.

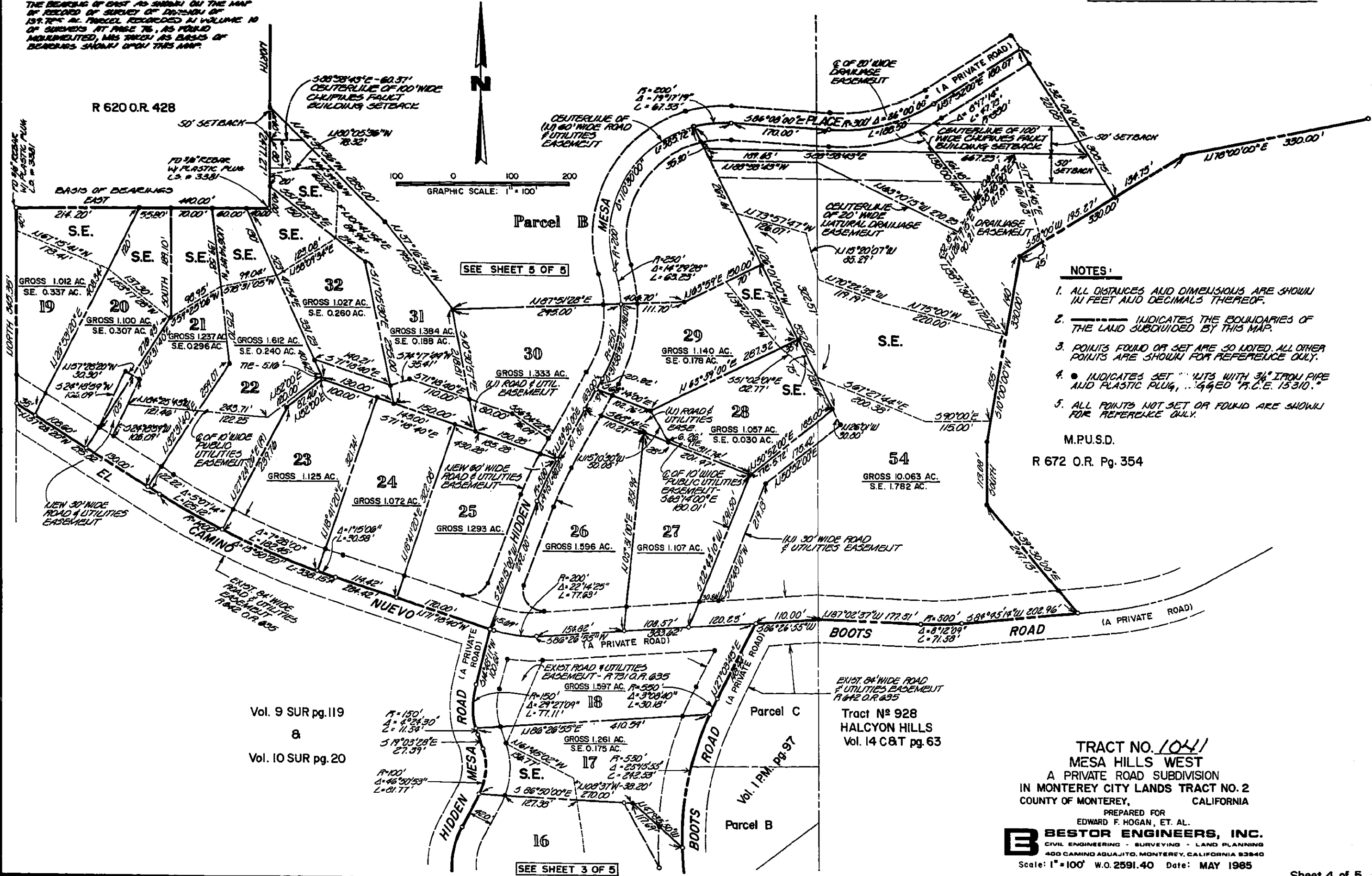
BESTOR ENGINEERS, INC.
 CIVIL ENGINEERING - SURVEYING - LAND PLANNING
 400 CAMINO AGUAJITO, MONTEREY, CALIFORNIA 93840
 Scale: 1" = 100' W.O. 2591.40 Date: MAY 1985



BASIS OF BEARINGS NOTE:

THE BEARING OF EAST AS SHOWN ON THE MAP IS RECORD OF SURVEY OF DIVISION OF 151.775 AC. PARCEL RECORDED IN VOLUME 10 OF SURVEYS AT PAGE 76, AS FOUND AND UNALTERED, WAS TAKEN AS BASIS OF BEARINGS SHOWN UPON THIS MAP.

NOTE: SEE SHEET 3 FOR INDEX MAP.



- NOTES:**
1. ALL DISTANCES AND DIMENSIONS ARE SHOWN IN FEET AND DECIMALS THEREOF.
 2. --- INDICATES THE BOUNDARIES OF THE LAND SUBDIVIDED BY THIS MAP.
 3. POINTS FOUND OR SET ARE SO NOTED. ALL OTHER POINTS ARE SHOWN FOR REFERENCE ONLY.
 4. ● INDICATES SET POINTS WITH 3/4" IRON PIPE AND PLASTIC PLUG, SET TO "P.C.E. 15310."
 5. ALL POINTS NOT SET OR FOUND ARE SHOWN FOR REFERENCE ONLY.

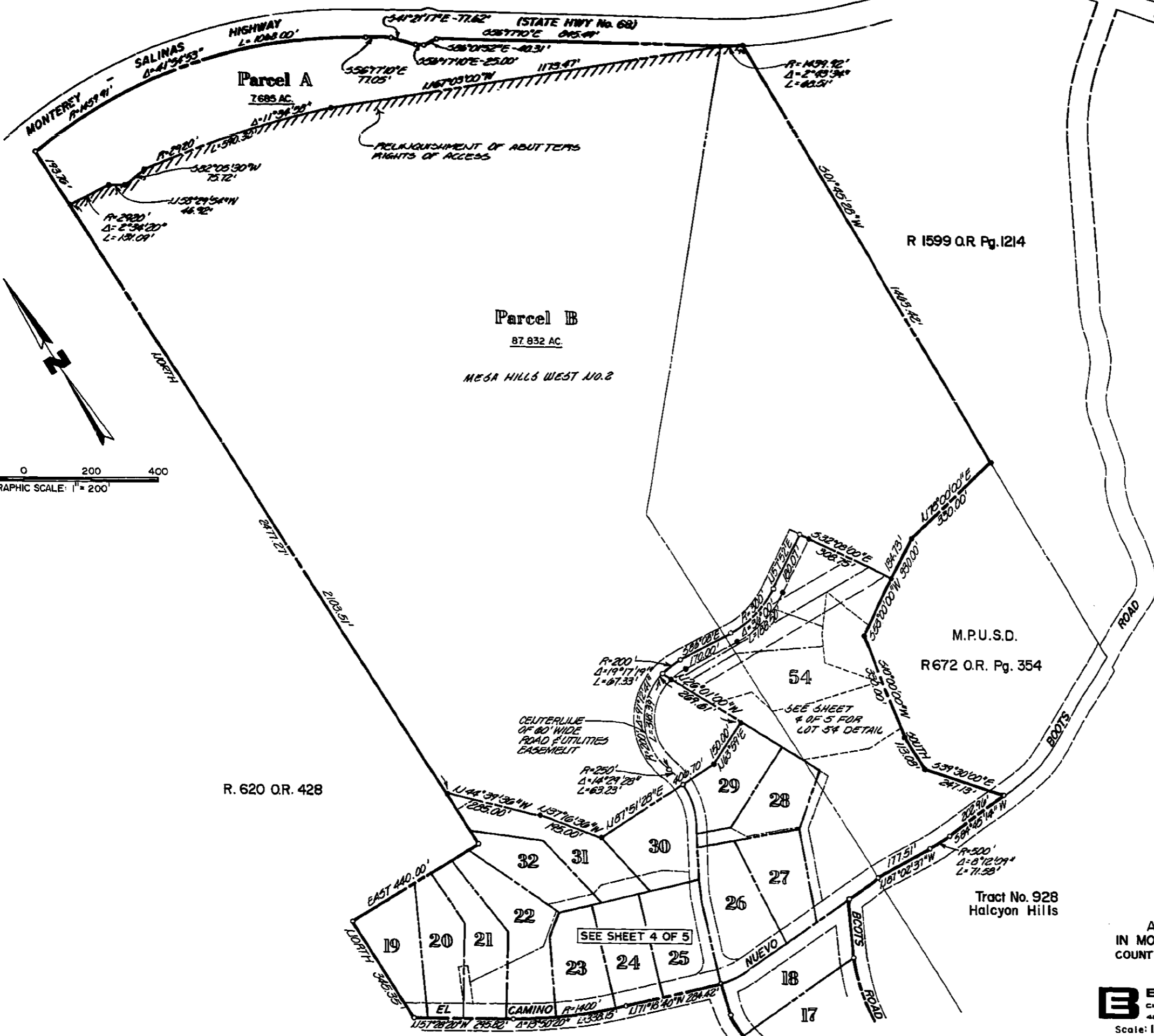
M.P.U.S.D.
R 672 O.R. Pg. 354

Vol. 9 SUR pg. 119
&
Vol. 10 SUR pg. 20

Tract No 928
HALCYON HILLS
Vol. 14 C & T pg. 63

TRACT NO. 1041
MESA HILLS WEST
A PRIVATE ROAD SUBDIVISION
IN MONTEREY CITY LANDS TRACT NO. 2
COUNTY OF MONTEREY, CALIFORNIA
PREPARED FOR
EDWARD F. HOGAN, ET. AL.
BESTOR ENGINEERS, INC.
CIVIL ENGINEERING - SURVEYING - LAND PLANNING
400 CAMINO AGUAJITO, MONTEREY, CALIFORNIA 93840
Scale: 1" = 100' W.O. 2591.40 Date: MAY 1985





NOTE: SEE SHEET 3 FOR INDEX MAP

200 0 200 400
GRAPHIC SCALE: 1" = 200'

R. 620 O.R. 428

R 1599 O.R. Pg. 1214

M.P.U.S.D.
R672 O.R. Pg. 354

Tract No. 928
Halcyon Hills

TRACT NO. 1041
MESA HILLS WEST
A PRIVATE ROAD SUBDIVISION
IN MONTEREY CITY LANDS TRACT NO. 2
COUNTY OF MONTEREY, CALIFORNIA

PREPARED FOR
EDWARD F. HOGAN, ET. AL.
B BESTOR ENGINEERS, INC.
CIVIL ENGINEERING - SURVEYING - LAND PLANNING
400 CAMINO AGUAJITO, MONTEREY, CALIFORNIA 93940
Scale: 1" = 200' W.O. 2591.40 Date: MAY 1985

0 10 20 30 40 50 60 70 80 90 100
DEPARTMENT OF PUBLIC WORKS-MICROFILM SCALE: 1" = 10' COUNTY OF MONTEREY